

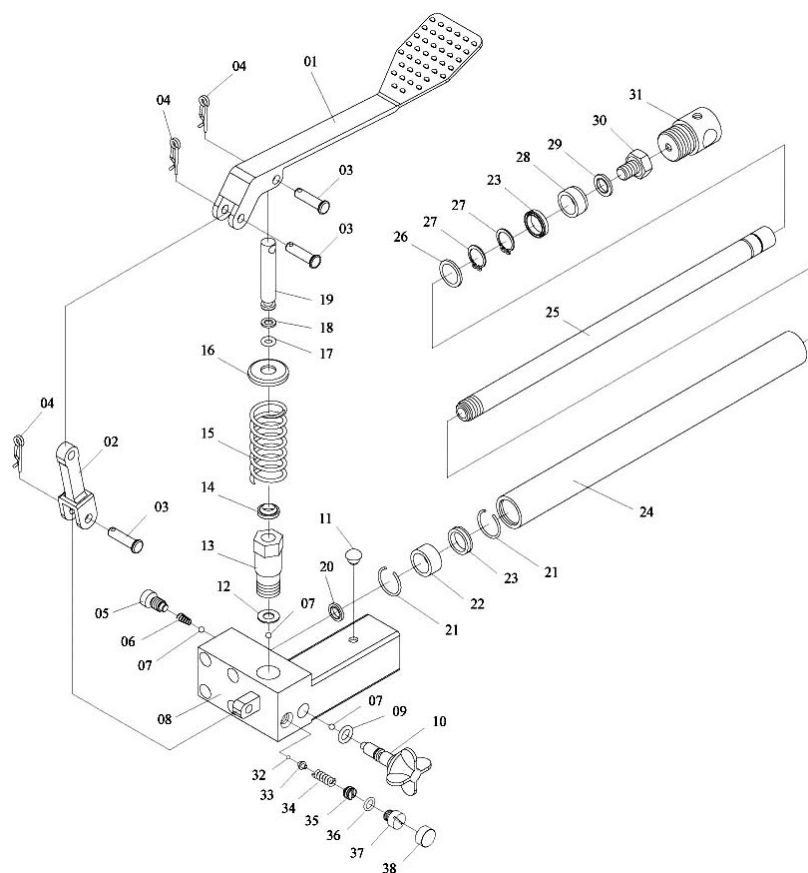
Item	Part No.	Description
1	NLN12.S	NYLOC NUT M12 ZINC DIN 985 (SINGLE)
2	WS680.02	WHEEL,CASTOR (100x8x33x128)
--	WS680.02B	WHEEL,CASTOR (W/BRAKE)(100x8x33x128) (NOT SHOWN)
3	WS680.03	ROD ASSEMBLY
4	SS1235.S	HEX HEAD SET SCREW M12x35mm SINGLE
5	WS680.05	ROLLER RACEWAY(NYLON)
6	WS680.06	ROLLER(ALUMINIUM)
7	WS680.07	SCREW
8	WS680.08	INNER BODY & AXLE ASSY

Item	Part No.	Description
9	WS680.09	PIN
10	WS680.10	THICK WASHER M12x35
11	SWM12.S	SPRING WASHER M12 ZINC (SINGLE)
12	WS680.12	LOCK PIN
--	WS680.12N	LOCK PIN (NEW TYPE) (NOT SHOWN)
13	WS680.13	OUTER BODY & AXLE ASSY
14	WS680.14	PEDAL LOCK ASSY
15	WS680.15	HYDRAULIC UNIT
16	SCB840.SB	SOCKET HEAD CAP SCREW M8x40 BLACK

NOTE: It is our policy to continually improve products and as such we reserve the right to alter data, specifications and component parts without prior notice.

IMPORTANT: No liability is accepted for incorrect use of product.

WARRANTY: Guarantee is 12 months from purchase date, proof of which will be required for any claim.



Item	Part No.	Description
1	WS680.J01	FOOT PEDAL
2	WS680.J02	CONNECTOR
3	WS680.J03	PIN
4	WS680.J04	R-PIN
5	WS680.J05	SCREW
6	WS680.J06	SPRING
7	WS680.J07	STEEL BALL 4.7mm
8	WS680.J08	PUMP BODY
9	WS680.J09	O-RING
10	WS680.J10	RELEASE VALVE
11	WS680.J11	OIL PLUG
12	WS680.J12	M7 COPPER WASHER INT TOOTH
13	WS680.J13	PUMP CYLINDER
14	WS680.J14	DUST COVER
15	WS680.J15	SPRING
16	WS680.J16	SPRING COVER
17	WS680.J17	O-RING
18	WS680.J18	NYLON RING
19	WS680.J19	PISTON

20	WS680.J20	U-CUP SEAL 16*24*5
21	WS680.J21	CIRCLIP
22	WS680.J22	BUSHING
23	WS680.J23	SEAL RING
24	WS680.J24	CYLINDER
25	WS680.J25	RAM
26	WS680.J26	CIRCLIP
27	WS680.J27	CIRCLIP
28	WS680.J28	BUSHING
29	WS680.J29	SEAL RING
30	WS680.J30	SCREW
31	WS680.J31	CONNECTING BASE
32	SB-4.7	STEEL BALL 4.7mm
33	WS680.J33	BALL SEAT
34	WS680.J34	SPRING
35	WS680.J35	SCREW
36	WS680.J36	O-RING
37	WS680.J37	SCREW
38	WS680.J38	PLASTIC CAP

NOTE: It is our policy to continually improve products and as such we reserve the right to alter data, specifications and component parts without prior notice.

IMPORTANT: No liability is accepted for incorrect use of product.

WARRANTY: Guarantee is 12 months from purchase date, proof of which will be required for any claim.