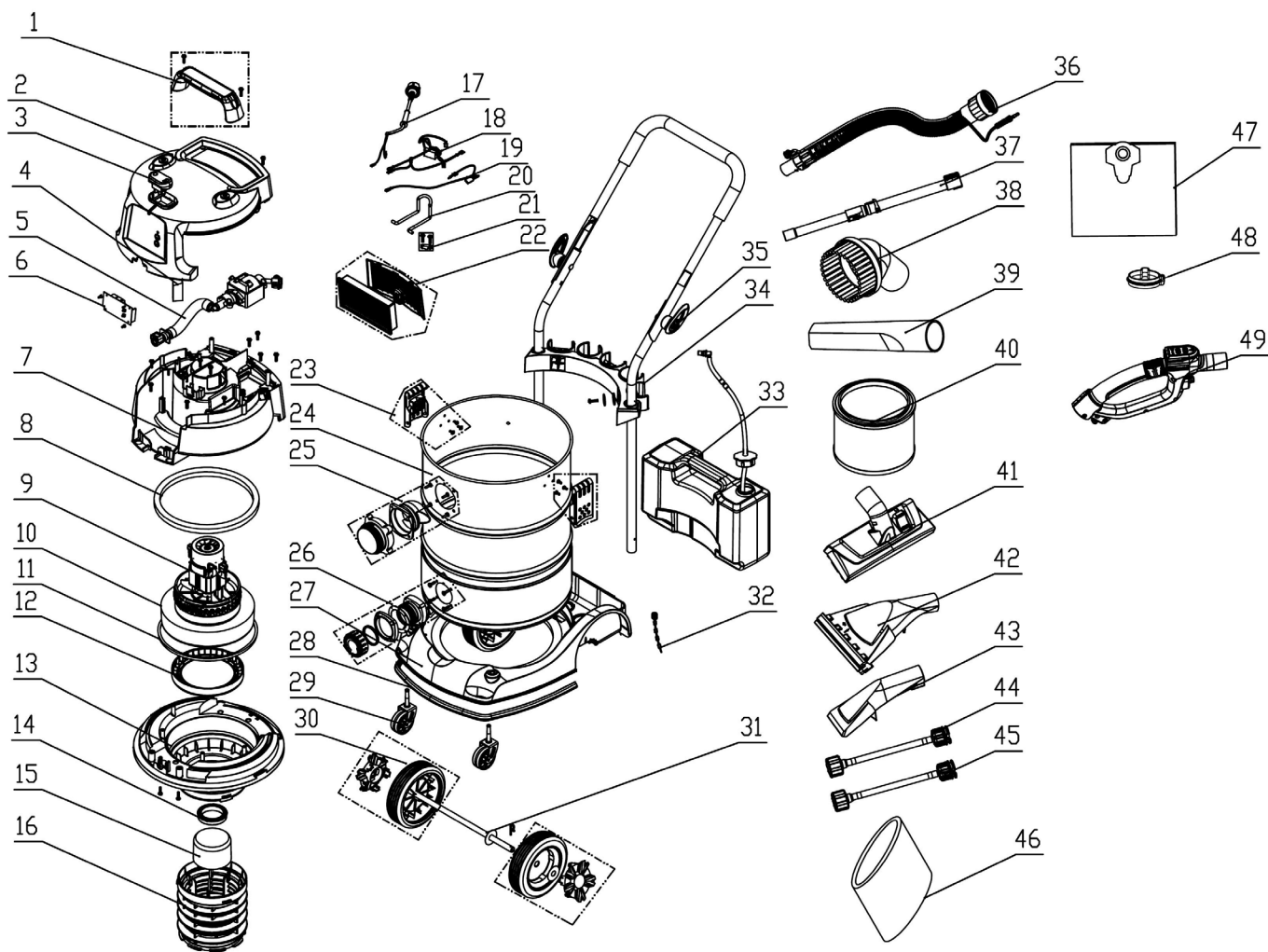




Parts Information:
**Valet Machine Wet & Dry 30ltr Stainless
Drum**
Model No: VMA915



NOTE: It is our policy to continually improve products and as such we reserve the right to alter data, specifications and component parts without prior notice.

IMPORTANT: No liability is accepted for incorrect use of product.

WARRANTY: Guarantee is 12 months from purchase date, proof of which will be required for any claim.



Butts of Bawtry

Station Yard Bawtry Doncaster South Yorks DN10 6QD UK

Tel: 0044 (0)1302 710868 Fax: 0044 (0)1302 719481

Web: www.buttsofbawtry.com Email: info@buttsbawtry.com



Parts Information:
**Valet Machine Wet & Dry 30ltr Stainless
Drum**
Model No: VMA915

Item	Part No.	Description
1	VMA915.01	HANDLE ASS'Y
2	VMA915.02	TOP COVER
3	VMA915.03	SWITCH
4	VMA915.04	FOAM
5	VMA915.05	PUMP ASS'Y
--	VMA915.05-1	DETERGENT CONNECTION VALVE ONLY (NOT SHOWN)
6	VMA915.06	PCB ASS'Y
7	VMA915.07	MIDDLE COVER ASS'Y
8	VMA915.08	SEAL RING
9	VMA915.09	MOTOR ASS'Y
10	VMA915.10	SEAL RING FOR MOTOR
11	VMA915.11	SEAL RING PROTECTOR
12	VMA915.12	SEAL RING
13	VMA915.13	LOWER COVER ASS'Y
14	VMA915.14	SEAL RING
15	VMA915.15	FLOAT
16	VMA915.16	FILTER BASKET
17	VMA915.17	POWER CORD ASS'Y
18	VMA915.18	CAPACITOR & INDUCTANCE ASS'Y
19	VMA915.19	CONNECTION ASS'Y
20	VMA915.20	HOOK
21	VMA915.21	CORD CLAMP ASS'Y
22	VMA915.22	AIR VENT (c/w FILTER)
23	VMA915.23	BIN CLIP ASS'Y
24	VMA915.24	STAINLESS STEEL BIN 30ltr
25	VMA915.25	AIR INLET ASS'Y
26	VMA915.26	WATER DRAIN ASS'Y
27	VMA915.27	BASE

Item	Part No.	Description
28	VMA915.28	BASE PROTECTION
29	VMA915.29	WHEEL,CASTOR (50x6x18x59)
30	VMA915.30	WHEEL,REAR FIXED (149x12x40)
31	VMA915.31	WHEEL AXLE
32	VMA915.32	CHAIN ASS'Y
33	VMA915.33	SOAP TANK ASS'Y
--	VMA915.33-1	O-RING FOR SOAP TANK PIPE (NOT SHOWN)
--	VMA915.33B-1	LONGER PIPE (NOT SHOWN)
--	VMA915.33B-2	SHORTER PIPE (NOT SHOWN)
34	VMA915.34	ACCESSORY STORAGE FRAME
35	VMA915.35	HANDLE ASS'Y
36	VMA915.36	SUCTION HOSE
--	VMA915.36-1	DETERGENT HOSE (NOT SHOWN)
--	VMA915.36-2	MALE INPUT O-RING (NOT SHOWN)
37	VMA915.37	STAINLESS TELESCOPIC TUBE
38	VMA915.38	ROUND BRUSH
39	VMA915.39	CREVICE TOOL
40	PC310CF	CARTRIDGE FILTER for PC310
41	VMA915.41	COMBO FLOOR BRUSH
42	VMA915.42	SHAMPOO HEAD (LARGE)
43	VMA915.43	SHAMPOO HEAD (SMALL)
44	VMA915.44	SHAMPOO SPRAYING NOZZLE (875mm)
45	VMA915.45	SHAMPOO SPRAYING NOZZLE (135mm)
46	PC200FF10	FOAM FILTER for PC200, PC200SD & PC300SD
47	PC300PB5	DUST COLLECTION BAG - PC300SD,PC300SDAUT
48	VMA915.48	HOSE STORAGE HOOK
49	VMA915.49	REMOTE HANDLE ASS'Y
--	VMA915.05-2	VALVE ASSEMBLY (INC PIPE,COVER AND CONNE (NOT SHOWN)

NOTE: It is our policy to continually improve products and as such we reserve the right to alter data, specifications and component parts without prior notice.

IMPORTANT: No liability is accepted for incorrect use of product.

WARRANTY: Guarantee is 12 months from purchase date, proof of which will be required for any claim.

Sealey Group, Kempson Way, Suffolk Business Park, Bury St Edmunds, Suffolk. IP32 7AR



01284 757500



01284 703534



sales@sealey.co.uk



www.sealey.co.uk