

TYRE TREAD WIDTH GAUGE

Instructions

1. Identify edges of tyre tread

Use the pen provided to mark where the tread ends & side wall starts. Do not mark the side wall of the tyre - Only the tread.



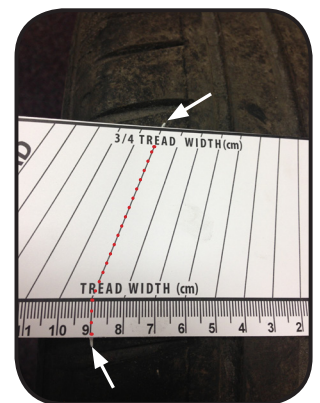
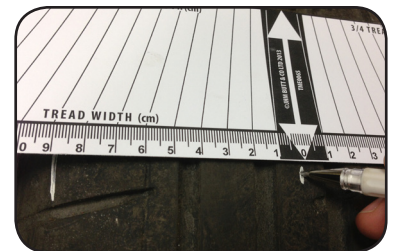
2. Draw the centre line of the tyre tread

Place the gauge on the tyre so that the 2 marks (made in the previous step) align equally. See picture. Using the pen provided clearly mark the centre line of the tyre shown by the large white arrow (0cm).

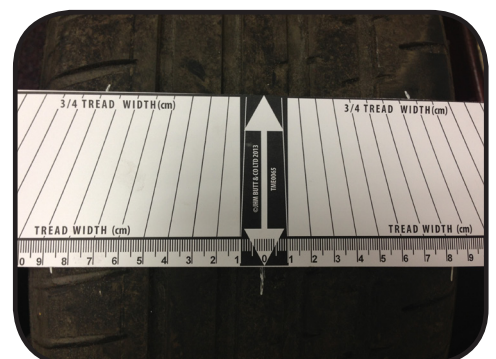


3. Determine the $\frac{3}{4}$ area of the tyre

With the gauge now clearly in the centre of the tyre, Locate your tyre tread end marks made in step 1. Using the gauge follow the diagonal lines to identify the $\frac{3}{4}$ point of the tread. Mark this point with the pen and the repeat for the other side of the tyre.



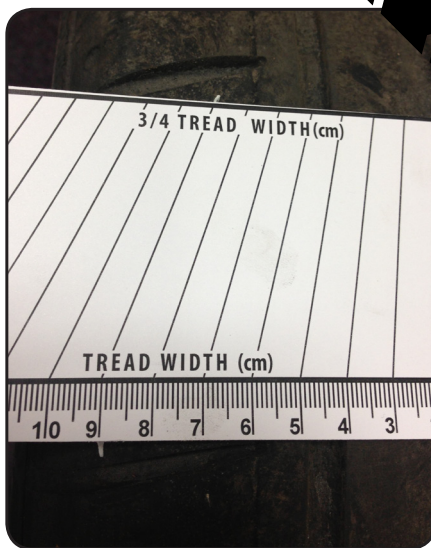
You have now defined the $\frac{3}{4}$ area of the tyre & can examine to check that the minimum tread allowed is present.



Instructions

3. Determine the $\frac{3}{4}$ area of the tyre

With the gauge now clearly in the centre of the tyre, locate your tyre tread end marks made in step 1. Using the gauge follow the diagonal lines to identify the $\frac{3}{4}$ point of the tread. Mark this point with the pen and the repeat for the other side of the tyre.



You have now defined the $\frac{3}{4}$ area of the tyre & can examine to check that the minimum tread allowed is present.

