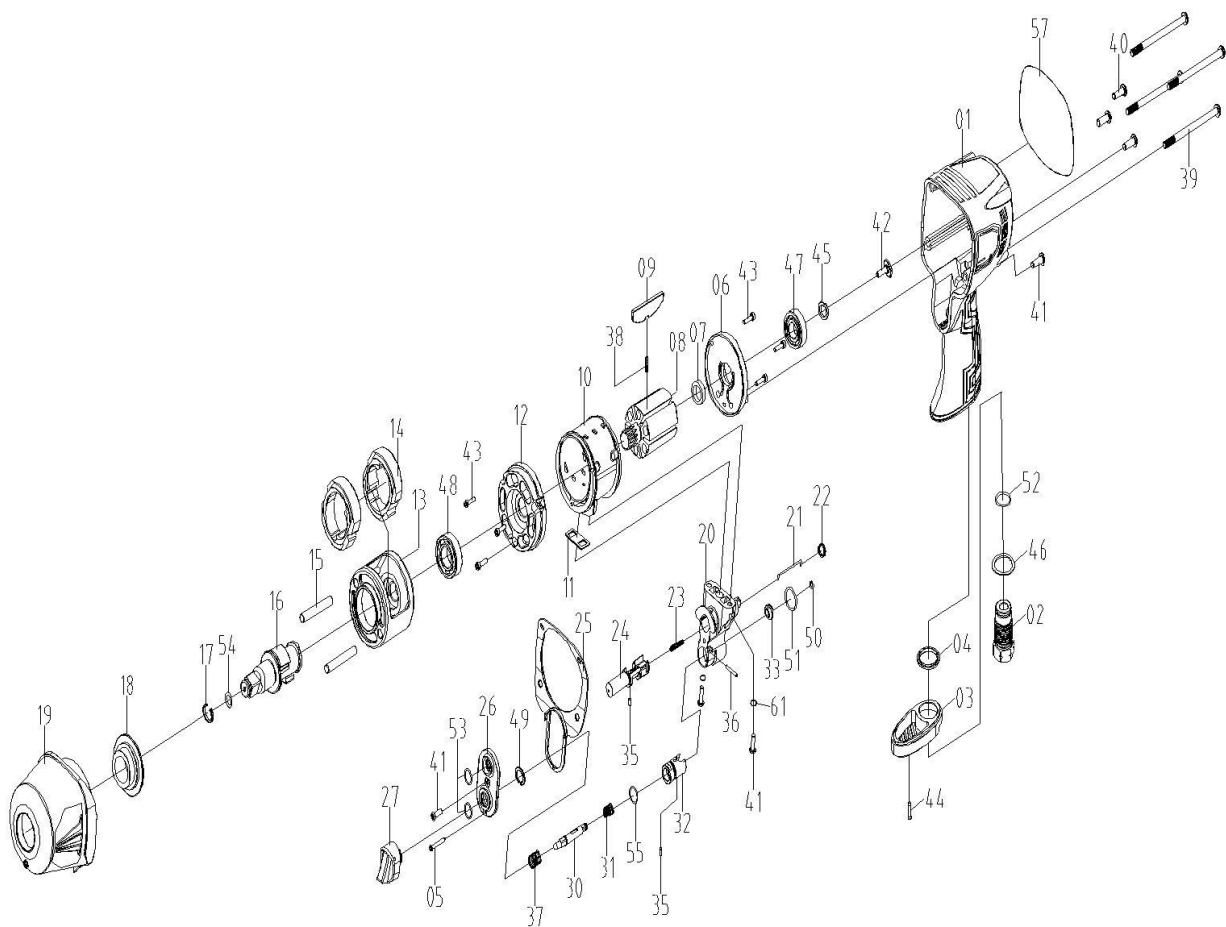




Parts Information:  
**Composite Air Impact Wrench 1/2" Sq Drive  
Twin Hammer  
Model No:SA6006**



**NOTE:** It is our policy to continually improve products and as such we reserve the right to alter data, specifications and component parts without prior notice.

**IMPORTANT:** No liability is accepted for incorrect use of product.

**WARRANTY:** Guarantee is 12 months from purchase date, proof of which will be required for any claim.



Parts Information:  
**Composite Air Impact Wrench 1/2" Sq Drive  
Twin Hammer  
Model No:SA6006**

1	SA6006.01	HOUSING
2	SA6006.02	AIR INLET BUSHING
3	SA6006.03	EXHAUST DEFLECTOR
4	SA6006.04	SEAL
5	SA6006.05	SCREW
6	SA6006.06	REAR END PLATE
7	SA6006.07	SPACER
8	SA6006.08	ROTOR
9	SA6006.09	ROTOR BLADE
10	SA6006.10	CYLINDER
11	SA6006.11	GASKET
12	SA6006.12	FRONT END PLATE
13	SA6006.13	HAMMER CAGE
14	SA6006.14	HAMMER DOG
15	SA6006.15	HAMMER PIN
16	SA6006.16	ANVIL (1/2")
17	SA6006.17	SOCKET RETAINER
18	SA6006.18	ANVIL BUSHING (1/2")
19	SA6006.19	HAMMER CASE ASS'Y
20	SA6006.20	VALVE BUSHING
--	SA6006.20-1	OIL VALVE FOR IMPACT ASS'Y CASE (NOT SHOWN)
21	SA6006.21	PIN
22	SA6006.22	SPRING
23	SA6006.23	SPRING
24	SA6006.24	REVERSE VALVE
25	SA6006.25	GASKET
26	SA6006.26	VALVE CLOSURE
27	SA6006.27	TRIGGER ASS'Y

Item	Part No.	Description
30	SA6006.30	TRIGGER PIN
31	SA6006.31	SPRING
32	SA6006.32	AIR REGULATOR
33	SA6006.33	THROTTLE VALVE
35	SA6006.35	PIN
36	SA6006.36	PIN
37	SA6006.37	SPRING
38	SA6006.38	SPRING
39	SA6006.39	CAP SCREW
40	SA6006.40	SCREW
41	SA6006.41	SCREW
42	SA6006.42	SCREW
43	SA6006.43	SCREW
44	SA6006.44	SCREW
45	SA6006.45	WASHER(USE SWM8.SB)
46	SA6006.46	WASHER
47	B/6002ZZ	BEARING 6002ZZ
48	B/6002ZZ	BEARING 6002ZZ
49	SA6006.49N	RETAINING RING
50	SA6006.50	O-RING
51	SA6006.51	O-RING
52	SA6006.52	O-RING
53	SA6006.53	O-RING
54	SA6006.54	O-RING
55	SA6006.55	O-RING
57	SA6006.57	NAMEPLATE
61	SA6006.61	WASHER

**NOTE:** It is our policy to continually improve products and as such we reserve the right to alter data, specifications and component parts without prior notice.

**IMPORTANT:** No liability is accepted for incorrect use of product.

**WARRANTY:** Guarantee is 12 months from purchase date, proof of which will be required for any claim.

**Sealey Group**, Kempson Way, Suffolk Business Park, Bury St Edmunds, Suffolk. IP32 7AR



01284 757500



01284 703534



sales@sealey.co.uk



www.sealey.co.uk