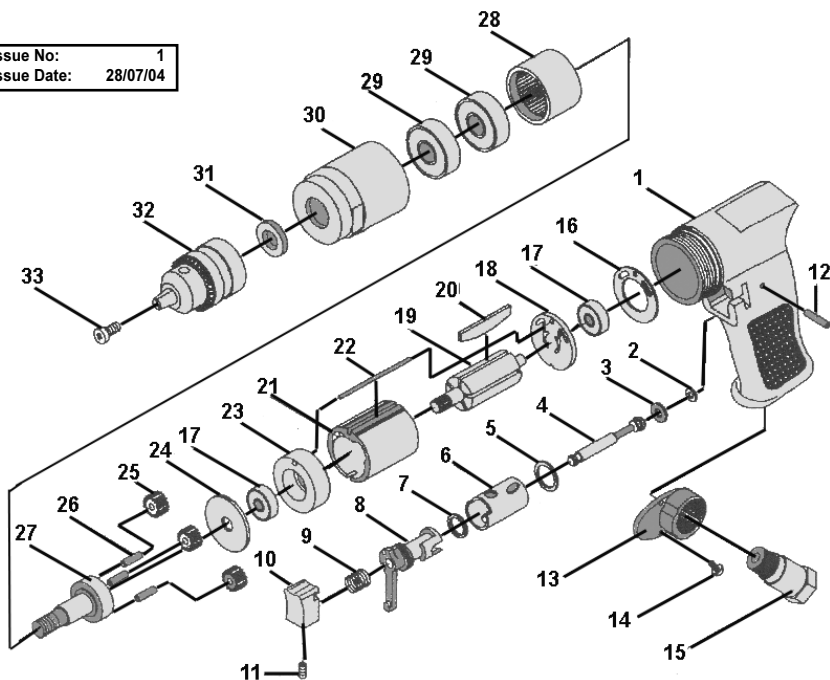


Issue No: 1  
Issue Date: 28/07/04



Item	Part No.	Description	Item	Part No.	Description
1	SA24.V2-01	HOUSING	20	SA23S.V3-17	ROTOR BLADE
2	SA23S.V3-02	O-RING	21	SA24.V2-21	CYLINDER
3	SA23S.V3-03	O-RING	22	SA24.V2-22	PIN
4	SA23S.V3-04	VALVE STEM	23	SA24.V2-23	FRONT END PLATE
5	SA23S.V3-05	O-RING	24	SA23S.V3-20	FRONT PLATE
6	SA24.V2-06	BUSHING	25	SA23S.V3-22	GEAR
7	SA24.V2-07	O-RING	26	SA23S.V3-23	PIN
8	SA24.V2-08	REVERSE LEVER	27	SA23S.V3-24	WORK SPINDLE
9	SA23S.V3-07	TRIGGER SPRING	28	SA23S.V3-25	THREAD RING GEAR
10	SA23S.V3-08	TRIGGER	29	SA23S.V3-26	BEARING
11	SA23S.V3-09	TRIGGER SCREW	30	SA23S.V3-27	CLAMP NUT
12	SA23S.V3-10	PIN	31	SA23S.V3-28	WASHER
13	SA23S.V3-11	MUFFLE COVER	32	SA23S.V3-29	USE DC/J-38 CHUCK 3/8"
14	SA23S.V3-12	SCREW			<b>CHUCK, DRILL 3/8" X 24</b>
15	SA23S.V3-13	AIR INLET	33	SA23S.V3-30	CHUCK SCREW
16	SA24.V2-16	REAR GASKET			<b>DC/J-38K-L KEY, "L" SHAPE, DRILL CHUCK</b>
17	SA23S.V3-14	BEARING			<b>DC/J-38K-T CHUCK KEY "T" SHAPED</b>
18	SA24.V2-18	END PLATE			<b>126/10500520 USE DC/J 38K-L CHUCK KEY</b>
19	SA23S.V3-16	ROTOR			

Thank you for purchasing a Sealey Product. Manufactured to a high standard this product will, if used according to these instructions and properly maintained, give you years of trouble free performance.



**IMPORTANT: PLEASE READ THESE INSTRUCTIONS CAREFULLY. NOTE THE SAFE OPERATIONAL REQUIREMENTS, WARNINGS AND CAUTIONS. USE THIS PRODUCT CORRECTLY AND WITH CARE FOR THE PURPOSE FOR WHICH IT IS INTENDED. FAILURE TO DO SO MAY CAUSE DAMAGE AND/OR PERSONAL INJURY AND WILL INVALIDATE THE WARRANTY. PLEASE KEEP INSTRUCTIONS SAFE FOR FUTURE USE.**

## 1. SAFETY INSTRUCTIONS

- ❑ **WARNING!** Ensure Health & Safety, local authority, and general workshop practice regulations are adhered to when using this equipment.
- ❑ **WARNING!** Disconnect from air supply before changing drill bits, or servicing, or performing any maintenance.
- ✓ Maintain the drill in good condition (use an authorised service agent).
- ✓ Replace or repair damaged parts. Use genuine parts only. Unauthorised parts may be dangerous and will invalidate the warranty.
- ✓ Use in a suitable work area. Keep area free from unrelated materials and ensure that there is adequate lighting.
- ✓ Before each use check condition of drill bit. Sharpen if necessary. If worn or damaged replace immediately.
- ✓ Ensure the speed rating (rpm) of the drill bit is the same as, or greater than, the speed rating of the drill.
- ✓ Ensure there are no flammable or combustible materials near the work area.
- ✓ Evaluate your working area before using the drill. Ceilings, floors and enclosures may contain hidden electrical wiring, water pipes or gas pipes.
- ❑ **WARNING!** Always wear approved eye (and/or face) and hand protection when operating the drill.
- ✓ Use face, dust, or respiratory protection in accordance with COSHH regulations.
- ✓ Depending on the task, the drilling noise level may exceed 84dB in which case wear safety ear defenders.
- ✓ Remove ill fitting clothing. Remove ties, watches, rings, other loose jewellery and contain and/or tie back long hair.
- ✓ Wear appropriate protective clothing and keep hands and body clear of working parts.
- ✓ Maintain correct balance and footing. Do not over reach, ensure the floor is not slippery, wear non-slip shoes.
- ✓ Keep children and unauthorised persons away from the working area.
- ✓ Check moving parts alignment on a regular basis.
- ✓ Ensure workpiece is secure before operating the drill. Never hold a workpiece by hand.
- ✓ Check the workpiece to ensure there are no protruding screws, bolts, nuts etc.
- ✓ Avoid unintentional starting.
- ✓ Remove chuck key before starting the drill.
- ❑ **WARNING!** Ensure correct air pressure is maintained and not exceeded. Recommended pressure 70-90psi
- ✓ Keep air hose away from heat, oil and sharp edges. Check air hose for wear before each use and ensure all connections are secure.
- ✓ Prolonged exposure to vibration from this drill poses a health risk. It is the owner's responsibility to correctly assess the potential hazard and issue guidelines for safe periods of use and offer suitable protective equipment.
- x **DO NOT** use the drill for a task it is not designed to perform.
- x **DO NOT** operate drill if any parts are damaged or missing as this may cause failure and/or personal injury.
- ❑ **WARNING! DO NOT** drill any materials containing asbestos.
- x **DO NOT** carry the drill by the hose, or yank the hose from the air supply.
- x **DO NOT** force, or apply heavy pressure to the drill; let the tool do the work.
- x **DO NOT** place air line attachments close to your face and do not point at other people or animals.
- x **DO NOT** operate drill when you are tired or under the influence of alcohol, drugs or intoxicating medication.
- x **DO NOT** use drill where there are flammable liquids, solids or gases such as paint solvents and including waste wiping or cleaning rags etc.
- x **DO NOT** carry the drill with your finger on the trigger.
- x **DO NOT** direct air from the air line at yourself or others.

### Risk of Hand Arm Vibration Injury

10mm Reversible Air Drill model no. SA24.V2 when operated in accordance with these instructions and tested in accordance with EN 28662-2: 1994 results in the following vibration emission declared in accordance with BS EN12096: 1996.

Measured vibration emission value: .....1.2m/s<sup>2</sup>

Uncertainty: .....0.48m/s<sup>2</sup>

**These values are suitable for comparison with emission levels of other tools that have been subject to the same test.**

**This tool may cause hand-arm vibration syndrome if its use is inadequately managed.**

### Recommended Measures to reduce risk of hand-arm vibration syndrome:

This item represents a low Hand Arm Vibration risk to users. The calculated minimum usage period exceeds 8 hours. We recommend appropriate safety equipment is utilised and regular breaks for the operator are employed to reduce any residual risk of fatigue or repetitive strain injury.