

Thank you for purchasing a Sealey product. Manufactured to a high standard this product will, if used according to these instructions and properly maintained, give you years of trouble free performance.



**IMPORTANT: PLEASE READ THESE INSTRUCTIONS CAREFULLY. NOTE THE SAFE OPERATIONAL REQUIREMENTS, WARNINGS & CAUTIONS. USE THE PRODUCT CORRECTLY AND WITH CARE FOR THE PURPOSE FOR WHICH IT IS INTENDED. FAILURE TO DO SO MAY CAUSE DAMAGE AND/OR PERSONAL INJURY AND WILL INVALIDATE THE WARRANTY. PLEASE KEEP INSTRUCTIONS SAFE FOR FUTURE USE.**

## 1. SAFETY INSTRUCTIONS

- ✓ Ensure that the sweeper is only used on hard/dry surfaces.
- ✓ Ensure that the dirt collection hopper is present and properly seated before commencing sweeping.
- ✓ The sweeper is for indoor use only.
- ✗ Do not leave the sweeper unattended, where it could become a hazard to other people or traffic in the sweeping area. For example, in a warehouse situation.
- ✗ Do not allow anyone to ride on the sweeper.
- ✗ Do not use the sweeper for any purpose other than that for which it was designed.
- ✗ Do not use the sweeper to clear up hazardous materials or any material that may attack the plastic chassis of the sweeper.
- ✗ Do not use the sweeper on wet surfaces.

## 2. INTRODUCTION

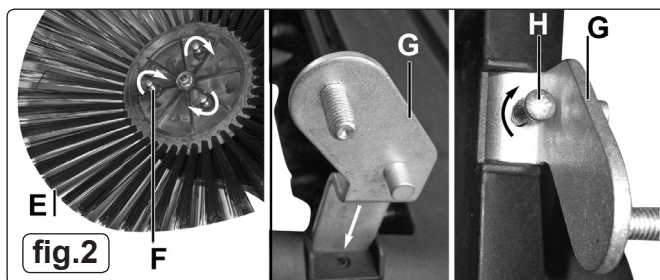
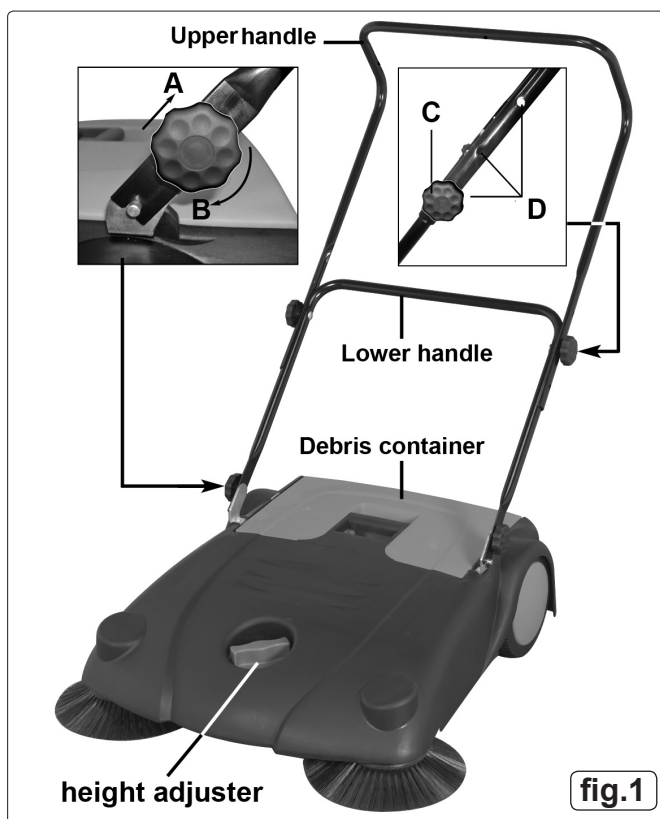
Suitable for maintaining any hard floor and ideal for removing dirt, dust and debris from large surface areas. Features 4-brush system with two side brushes and two further brushes set underneath the unit to easily lift debris into the hopper. Fitted with tubular handle and adjustable castor wheel that raises the sweeper 20mm enabling larger pieces of debris to be swept up.

Model No ..... **FSW70**  
Operating Width ..... 700mm  
Hopper capacity ..... 20ltr

## 3. ASSEMBLY & USE

- 3.1 Circular brushes:** Attach each brush to its hub using the 6 screws provided (3 for each brush). Ensure each brush is correctly seated before tightening. See fig.2E&F.
- 3.2 Handle brackets:** Insert the right hand bracket into the slot near the front corner of the debris collector with the thread and spigot facing outwards as shown in fig.2G. Secure the bracket using the 25mm self tapping screw provided, as shown in fig.2H. Mount and secure the left hand bracket in the same way.
- 3.3 Lower Handle:** Take the lower handle tube and place the slots in the flattened ends over the threaded spigots on the handle brackets. Ensure that the open slots at each end of the lower handle are engaged with the plain spigot on the mounting brackets. Retain the handle in place by screwing a black plastic knob onto each threaded spigot. See fig.1B.
- 3.4 Upper Knob:** The upper handle has three alternative mounting holes in the flattened portions of the handle. Align the chosen mounting holes with the holes in the upper part of the lower handle and insert the supplied coach bolts through both frames and retain with the black plastic knobs supplied as shown in fig.1C&D.
- 3.5 Handle stowage:** The handle can be folded down for storage purposes. Loosen the lower mounting knobs and pull the handle upwards to disengage the slotted ends from the plain spigots on the mounting brackets. See fig.1B&A. Hinge the handle forwards and allow it to rest on the body of the sweeper.

- 3.6 Use:** Ensure the handle height is correctly adjusted for the convenience of the operative. Make sure that the handle fixings are tight and the debris container is properly seated within the main body of the sweeper. Work methodically up and down the area to be swept, ensuring that each 'pass' overlaps the previous one. To ensure the efficiency of the brushes, push the sweeper at a good, even pace. To capture larger pieces of debris the basic clearance of the sweeper can be raised a further 20mm by rotating the height adjuster seen in fig.1 clockwise. Check the debris container regularly by lifting it out. Empty it if required. Place it back into the sweeper as shown in fig.1. Periodically, clean the exterior of the sweeper with a damp cloth.



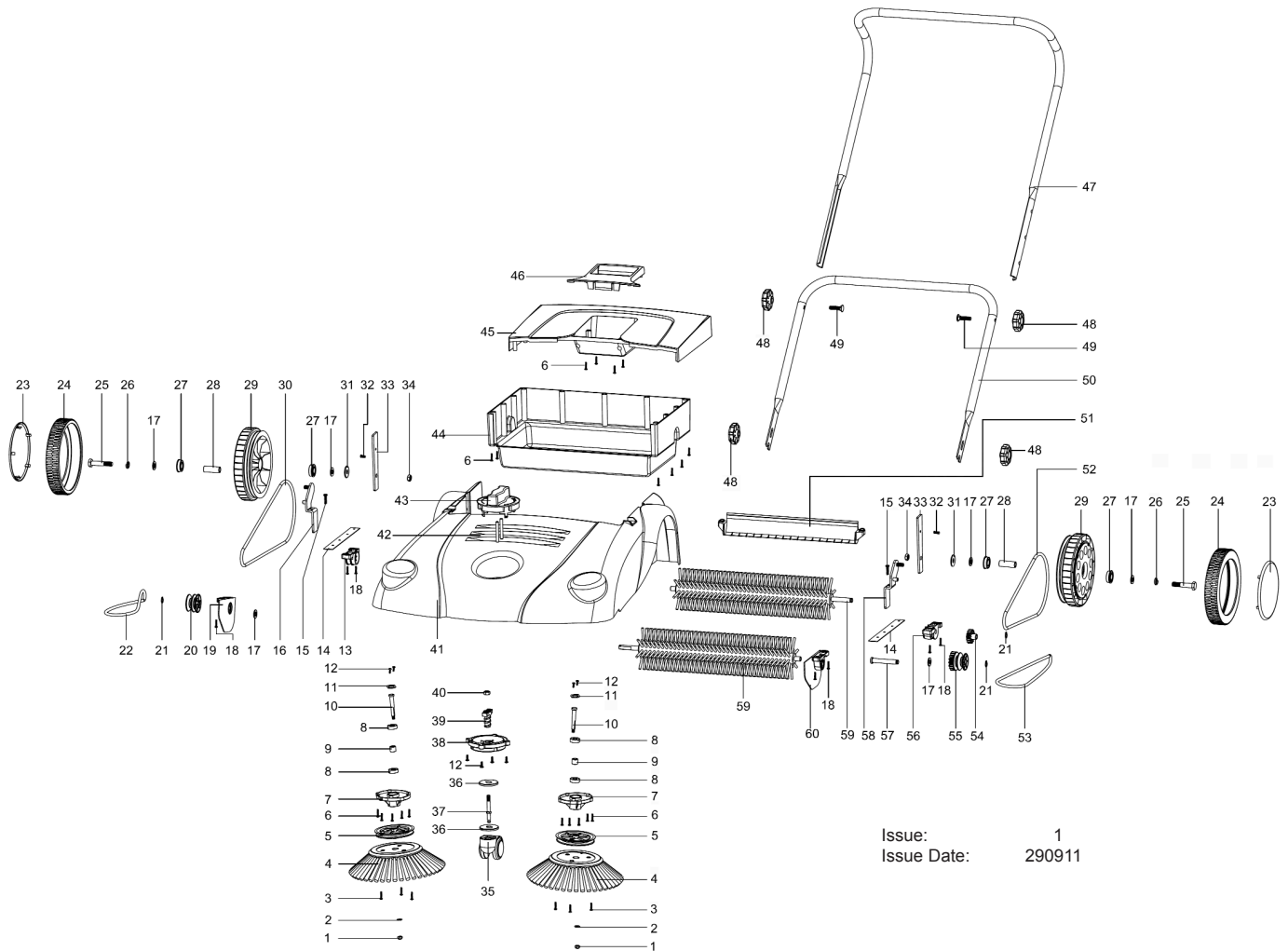
**NOTE:** It is our policy to continually improve products and as such we reserve the right to alter data, specifications and component parts without prior notice.

**IMPORTANT:** No liability is accepted for incorrect use of this product.

**WARRANTY:** Guarantee is 12 months from purchase date, proof of which will be required for any claim.

**INFORMATION:** For a copy of our latest catalogue and promotions call us on 01284 757525 and leave your full name and address, including postcode.





Issue: 1  
Issue Date: 290911

ITEM	PART NO	DESCRIPTION	ITEM	PART NO	DESCRIPTION	ITEM	PART NO	DESCRIPTION
1	FSW70.01	LOCK NUT (M6)	21	FSW70.21	CLIP	41	FSW70.41	BODY
2	FSW70.02	WASHER	22	FSW70.22	RUBBER BELT (6x480)	42	FSW70.42	BOLT (6x50)
3	FSW70.03	SCREW (ST3.9x16)	23	FSW70.23	WHEEL COVER	43	FSW70.43	HEIGHT ADJUSTABLE SWITCH
4	FSW70.04	ROUND BRUSH	24	FSW70.24	WHEEL	44	FSW70.44	COLLECTION TRAY (LOWER)
5	FSW70.05	PULLEY	25	FSW70.25	HEX SCREW (M10x65)	45	FSW70.45	COLLECTION TRAY (UPPER)
6	FSW70.06	SCREW (3.9x18)	26	FSW70.26	SPRING WASHER	46	FSW70.46	HANDLE FOR COLLECTION TRAY
7	FSW70.07	BRUSH SUPPORT	27	FSW70.27	STEEL COVER	47	FSW70.47	HANDLE, LOWER
8	FSW70.08	BEARING (608)	28	FSW70.28	SPINDLE	48	FSW70.48	HANDLE FIX NUT
9	FSW70.09	BEARING COVER	29	FSW70.29	INNER WHEEL	49	FSW70.49	SCREW (M8x30)
10	FSW70.10	SPINDLE FOR ROUND BRUSH	30	FSW70.30	RUBBER BELT (6x885)	50	FSW70.50	HANDLE, UPPER
11	FSW70.11	BEARING COVER	31	FSW70.31	WASHER	51	FSW70.51	ROLLER BRUSH COVER
12	FSW70.12	SCREW (ST3.9x12)	32	FSW70.32	SCREW (M6x8)	52	FSW70.52	RUBBER BELT (6x740)
13	FSW70.13	FIXING FOR ROLLER	33	FSW70.33	WHEEL SUPPORT	53	FSW70.53	RUBBER BELT (6x610)
14	FSW70.14	SUPPORT CUSHION	34	FSW70.34	NUT (M10)	54	FSW70.54	GEAR (A)
15	FSW70.15	SCREW (ST5x25)	35	FSW70.35	CASTOR WHEEL	55	FSW70.55	GEAR (B)
16	FSW70.16	METAL FIXING (RIGHT)	36	FSW70.36	WASHER	56	FSW70.56	ROLLER BRUSH SUPPORT
17	FSW70.17	CUSHION	37	FSW70.37	WHEEL SHAFT	57	FSW70.57	ROLLER BRUSH SPINDLE
18	FSW70.18	SCREW (ST3.9x25)	38	FSW70.38	WHEEL HOLDER	58	FSW70.58	METAL FIXING (LEFT)
19	FSW70.19	ROLLER COVER (RIGHT)	39	FSW70.39	ADJUSTMENT SPINDLE	59	FSW70.59	ROLLER BRUSH
20	FSW70.20	PULLEY	40	FSW70.40	NUT (M8)	60	FSW70.60	ROLLER SUPPORT

**NOTE:** It is our policy to continually improve products and as such we reserve the right to alter data, specifications and component parts without prior notice.

**IMPORTANT:** No liability is accepted for incorrect use of product.

**WARRANTY:** Guarantee is 12 months from purchase date, proof of which will be required for any claim.

**INFORMATION:** For a copy of our latest catalogue and promotions call us on 01284 757525 and leave your full name and address, including postcode.