

**steril®**

**KON**

**DIAMOND LIFT**

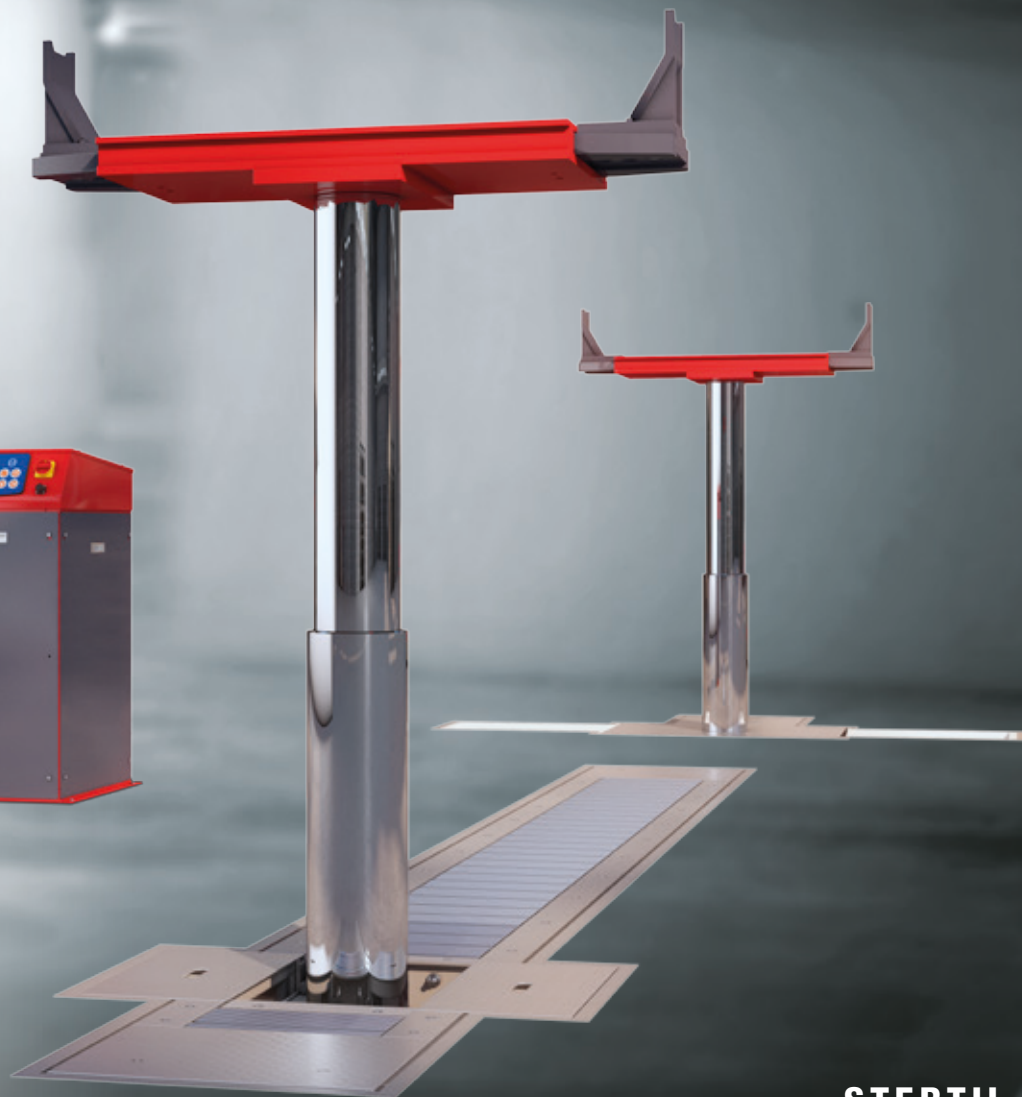


HEAVY-DUTY IN-GROUND LIFT

# DIAMONDLIFT

The premium, flexible solution with a lifting capacity of 15,000 kg or 16,000 kg per piston and a total of 64,000 kg

 **ebright**  
SMART CONTROL SYSTEM



**STERIL**  
SUPERIOR SOLUTIONS

# Superior Solutions



The Stertil Group provides customised and technically advanced solutions for heavy duty vehicle lifting requirements and loading bay equipment for customers throughout the world, including the best possible service from skilled local partners. These superior solutions are conceived, developed and implemented by a team of professional specialists with unique expertise. Thanks to the quality of its people; entirely in-house production and its international organisation, Stertil-Koni is the world's number one in the field of heavy duty vehicle lifting.



## Safety, Environmentally-friendly and Completely Flexible

Setting a new benchmark for the in-ground piston lift market, the DIAMONDLIFT versions give you the freedom of choice for a variety of workshop situations. Whether you have a new build situation; a renovation and even in difficult building conditions, the DIAMONDLIFT configurations can be made to fit your specific requirements.

With the highest level of safety and accredited third party testing and validation resulting in a superior innovative lifting solution.



**BUTTS OF  
BAWTRY**  
ESTABLISHED SINCE 1971

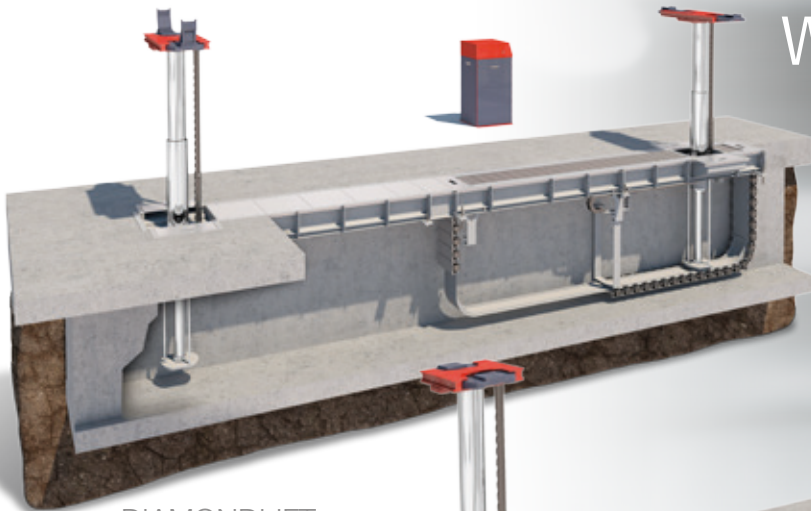
## Butts of Bawtry

Station Yard Bawtry Doncaster South Yorks DN10 6QD UK

Tel: 0044 (0)1302 710868 Fax: 0044 (0)1302 719481

Web: [www.buttsofbawtry.com](http://www.buttsofbawtry.com) Email: [info@buttsbawtry.com](mailto:info@buttsbawtry.com)

# Stertil-Koni In-Ground DIAMONDLIFT with **ebright Smart Control System**



DIAMONDLIFT  
with frame



DIAMONDLIFT with cassette



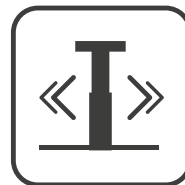
HIGHEST  
SAFETY LEVEL



TOUCH  
SCREEN



ENVIRONMENTALLY  
FRIENDLY



COMPLETELY  
FLEXIBLE

## Full-colour touch screen control

The revolutionary **ebright Smart Control System** combines intuitive **ease of use** with maximum visual information about the lifting process. It offers the following:

- Full-colour 7" touch screen control, works even when wearing gloves
- User-configured options, such as choice of language, safety warnings and scheduled maintenance
- All relevant information available at a glance
- Customisable owner ID key to prevent unauthorised operation



# The DIAMOND LIFTs any fleet



Stertil-Koni offers a solution to fit your needs. Whilst there is the choice between a cassette or frame for installation for a wide range of workshop circumstances, there is also the choice between a Standard or a Continuous Recess™ version.

The Standard DIAMONDLIFT has 1 or 2 parking pockets and the bolsters fall into the parking pockets. Ideal for vehicles with less extensive undercarriages. The Continuous Recess™ version with a broad base frame or cassette is recommended for vehicles with low ground clearance, for example city transit and articulated buses, preventing damage to the undercarriage of the vehicle. The moveable pistons can recess below floor level anywhere within the travel range.

## Wide Application

- Capacities of 15,000 kg or 16,000 kg per piston up to 64,000 kg per lift and piston configurations of 2, 3 or 4 pistons for multiple axle vehicles
- Maximum flexibility horizontal travel range of the moveable pistons:
  - Cassette version: 3000 mm, 4000 mm or 5200 mm
  - Frame version: tailor-made ranges due to modular configuration of the frame
- High vehicle lifting, for easy access, up to 1855 mm
- Choice in rolling aluminium cover plate system or steel cover sliding plates
- Maximum width lifting support/bolster 1395 mm
- Standardly equipped with a full set of lifting adapters



## Maximum Innovative Safety

- Gravity engaged locking system with increments of 75 mm and 21 locking positions from 220 mm from floor level (ideal for tyre bays)
- Locking system acts as a parking system with no risk of unwanted lowering
- Innovative ultrasonic sensors provide real-time synchronisation
- Drive-over, anti-skid anodised aluminium pit covers prevent tools being dropped in the pit as well as reducing tripping hazards with a wheel load capability of 6,000 kg and a point load of 3,400 kg
- Programmable lifting height which is suitable for double decker buses and high vehicles
- Locking bars manufactured from very strong hardened, nitro-carburised steel





Flip-Up Adapter



Differential Adapter



Landing Gear Adapter

## Easy Use and Maintenance

- All electrical components above floor level and easy accessible
- Smoothly operating horizontal moveable pistons with hydraulic operated inverted rack and pinion system
- The HOME-indicator shows the operator when it is safe to relocate the movable unit and adjust for different wheelbases. It also indicates when it is safe for the vehicle to exit the bay
- Optional detachable remote control with quick disconnect
- Easy access for manual lowering in the event of a power outage
- All power units and control components are located in the above-ground console to allow easy access for troubleshooting and maintenance
- Continuous hinge with no moving parts
- Moveable piston assembly and cover system is horizontally positioned utilising an inverted rack and pinion design hydraulically-driven
- The hydraulic drive system is self-aligning and self-cleaning
- The optional Automatic Wheel Base Positioning (AWBP) system for the moveable lifting unit, allows for pre-set programming of an endless number of vehicles which can be saved and activated



## Robust Stertil-Koni Slider System

This especially designed robust slider system is very durable and very effective for the distribution of the high point load. Conventional in-ground lifts have a roller system which is often susceptible to defects due to the high point load which can cause damage to the lift.

## Highly Durable Pistons

- Hard chrome-plated piston construction very durable with long life span
- By design, all the critical seals are inside the telescopic cylinder, therefore protecting them from any potential damage caused by dirt or debris

## Durable and “Green” Superiority

- The top part of the DIAMONDLIFT is completely hot-galvanised
- **DiamondGuard®** is a high-quality coating that protects the cassettes from electrolysis and corrosion as well as hazardous workshop fluids and prevents soil contamination
- DIAMONDLIFT high pressure hydraulics, only require 18 liters of biodegradable oil per piston
- All hydraulics components are above the ground so in the event of leakage no contamination to the ground





Intuitive  
controls

High resolution  
7" touch screen

## ebright Features

SMART CONTROL SYSTEM

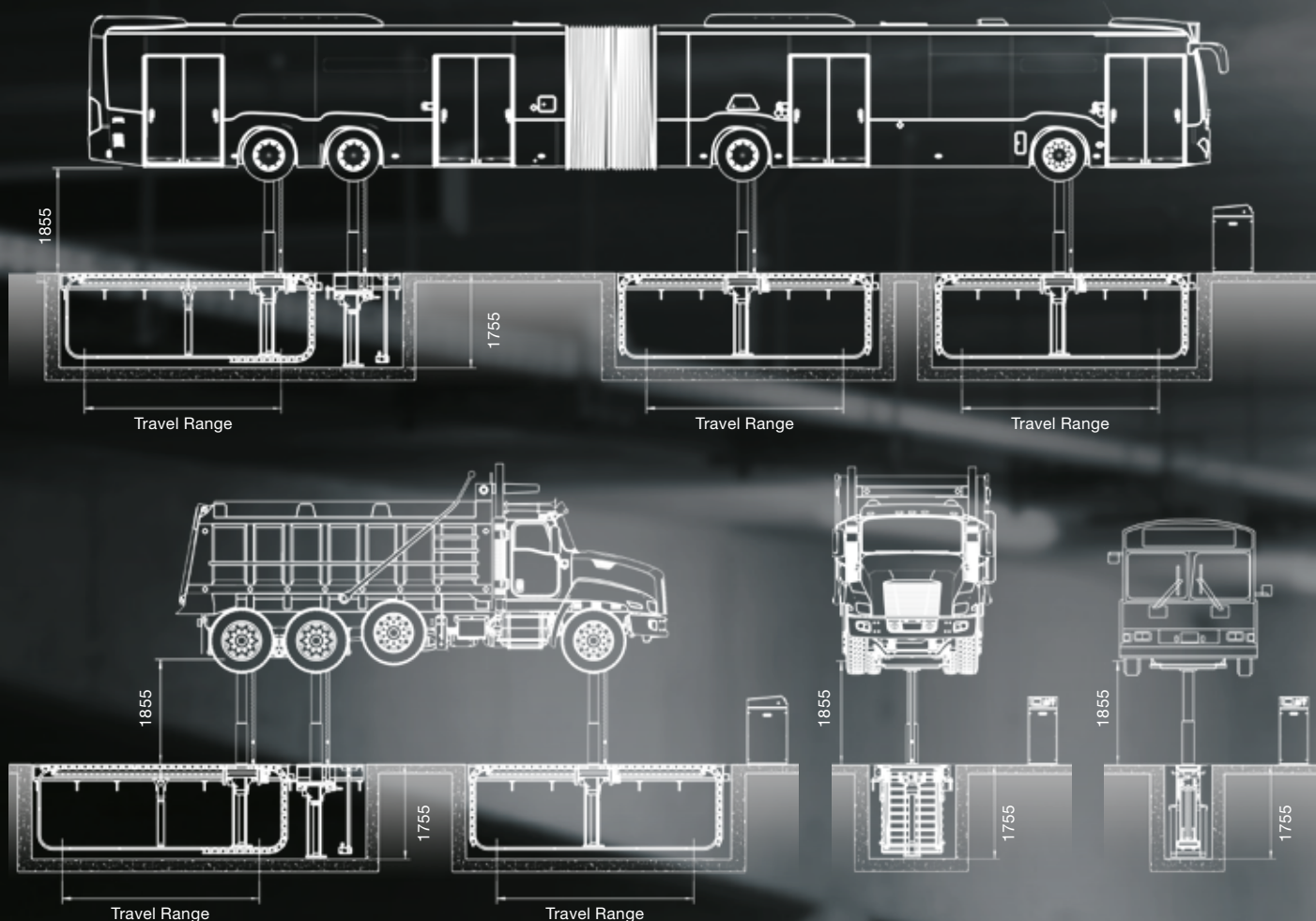
- High resolution 7" touch screen
- Owner/User configurable system with user ID key
  - Individual user settings for setting language and units
  - Protection against unauthorised use due to personalised ID key
- Maintenance notifications
- Warning & failure information
- Visual display of maximum programmable lifting height if set
- Operation manual on-screen available if required
- Tracking of specific operations and information codes
- Intuitive controls with actual data about the lift:
  - Actual lifting height displayed
  - Customisable owner ID-Key to prevent unauthorised operation
  - Indication for All, Fixed or Movable operation mode

Versions	DIAMONDLIFT cassette	DIAMONDLIFT cassette + cont. recess	DIAMONDLIFT frame	DIAMONDLIFT frame + cont. recess
Aluminium rolling cover system	✓	✓	✓	✓
For the frame version an economical alternative for the aluminium rolling covers is a version with steel sliding cover plates	✗	✗	✓	✗
Continuous recess where the movable bolster is flush with the workshop floor and very suitable to accommodate vehicles with extremely low ground clearance	✗	✓	✗	✓
Parking pockets <sup>1</sup> (bolsters are flush with the floor in lowest position)	✓	✗	○	✗
Integrated covers for recess pockets	✓	✗	○ <sup>1</sup>	✗
Maximum installation depth	1830 mm	1830 mm	1700 mm	1700 mm
Minimum wheel base possible	1575 mm	1575 mm	1220 mm	1220 mm
Below grade wheel spotting dishes	✓	✓	○	○
Liquid detection system	✓	✓	✓	✓

<sup>1</sup> When optional Parking pockets are ordered they will be supplied with integrated covers



## Technical specifications



Specification	DIAMOND 64 - 70	DIAMOND 96 - 105	DIAMOND 128 - 140	
Lifting capacity	30,000 - 32,000	45,000 - 48,000	60,000 - 64,000	kg
Lifting height	1,855			mm
Pit depth	1,755			mm
Travel Range cassette	3000/4000/5200			mm
Travel Range frame	variable from 3048 up to 5791			mm
Minimum wheelbase	starting at 1220			mm
Lifting/Lowering time	90/90			Sec
Compressed air supply	Filtered/regulated for 140 lpm at 4 Bar			
Electrical supply	3 phase, 400			Volt
Motor power	2 x 3.7	3 x 3.7	4 x 3.7	kW

### More information?

For more information about the DIAMONDLIFT or any other products from the Stertil-Koni product range, please do not hesitate to contact us. We will be pleased to assist you.