

3 TON PROFESSIONAL Low Lift Jack

Operating Instructions

BTJ0033



FOR YOUR SAFETY

Please read these instructions carefully and retain them for future use.

Specifications

Specifications are subject to change without notice

Model	Capacity (Kg)	Min Height	Max Height	Nett Weight (Kg)
BTJ0033	3000	98mm	535mm	44

SAFETY INSTRUCTIONS:

Read-Study and understand all warning and operating instructions prior to use. DO NOT OVERLOAD this jack beyond its rated capacity. This jack is designed for use on hard level surfaces only. This is a lifting device only. The load must be supported immediately by other appropriate means such as correctly rated axle stands. DO NOT move or dolly the vehicle while on the jack: Lift only on areas of the vehicle as specified by the vehicle manufacturer. No alterations to the jack shall be made. Failure to heed these warnings may result in damage to jack and/or failure resulting in personal injury or property damage. Always Inspect the jack before each use.

SAFETY INFORMATION FOR FIRST USE:

Sometimes during shipment air can get into the hydraulic system, causing poor lifting performance. Purge any air from the system by turning the jack handle one full turn anti-clockwise. With the saddle down pump the handle rapidly 8 full strokes. Turn the jack handle clockwise to close the valve. Pump the jack handle until the saddle reaches max height and continue to pump several times to remove trapped air in the ram. Carefully and slowly pinch oil fill plug to release the trapped air. Turn handle anti-clockwise and lower saddle completely. Finally turn handle clockwise to closed position and check for correct pump action. This procedure may have to be performed more than once to ensure all the air is evacuated.

OPERATING INSTRUCTIONS:

Raising the Jack

1. Follow the vehicle manufacturer's recommended guidelines for lifting. Engage the emergency brake and chock each unlifted wheel in both directions to prevent inadvertent vehicle movement.
2. Locate and close the release valve by turning the handle clockwise until firm resistance is felt.
3. Refer to the vehicle manufacturer owner's manual to locate approved lifting points on the vehicle. Center jack saddle under the lift point.
4. Verify lift point then use handle pump to contact lift point. To lift, pump handle until load reaches desired height.
5. Transfer the load immediately to appropriately rated jack stands.

Lowering the Jack

1. Raise load high enough to clear the jack stands.
2. Remove jack stands, carefully.
3. **Slowly** turn the release valve (handle) counter-clockwise, but no more than 1/2 full turn. If the load fails to lower:
 - a. Use another jack to raise the vehicle high enough to reinstall jack stands.
 - b. Remove the malfunctioning jack and then the jack stands.
 - c. Using the functioning jack, lower the load by turning the operating handle counter-clockwise, but no more than 1/2 full turn.
4. After removing jack from under the load, push saddle down to reduce ram exposure to rust and contamination.

General Maintenance Procedures:

Always use good quality hydraulic oil. If possible do not mix oils. Never use any other type of oil or fluid as this will invalidate the warranty. When filling the jack with oil ensure no dirt or any other substance to enter the hydraulic system. Check the hydraulic system every 4 months to ensure it is free from corrosion. If corrosion is present, clean the part with an oily cloth. Always store the jack in a lowered position.

Adding Oil

1. Lower saddle fully.
2. Set jack in its upright, level position.
3. Locate and remove air vent cap.
4. Fill with oil until ~3/16 inch above the inner cylinder as seen from the air vent cap hole.
5. Reinstall the air vent cap.

Changing Oil

For best performance and longest life, completely replace hydraulic at least once a year.

1. Lower saddle fully.
2. Remove the air vent cap.
3. Lay the jack on its side and drain the fluid into a suitable container.

Note: *Dispose of hydraulic fluid in accordance with local regulations.*

4. Fill with oil until ~3/16 inch above the inner cylinder as seen from the air vent cap hole.
5. Reinstall the air vent cap.

TROUBLESHOOTING

Symptom	Possible Causes	Corrective Action
Jack will not lift load	<ul style="list-style-type: none">• Release valve not tightly closed• Overload condition	<ul style="list-style-type: none">• Ensure release valve tightly closed• Remedy overload condition
Jack bleeds off after lift	<ul style="list-style-type: none">• Hydraulic unit malfunction	<ul style="list-style-type: none">• Discontinue use, contact Torin Jacks, Inc.
Jack will not lower after unloading	<ul style="list-style-type: none">• Reservoir overfilled• Linkages binding• Fluid level low	<ul style="list-style-type: none">• Drain fluid to proper level• Clean and lubricate moving parts• Ensure proper fluid level
Will not lift to full extension	<ul style="list-style-type: none">• Fluid level low	<ul style="list-style-type: none">• Ensure proper fluid level

©JHM BUTT & CO LTD 2013



JHM Butt & Co Ltd

T: 01302 710868 F: 01302 719481

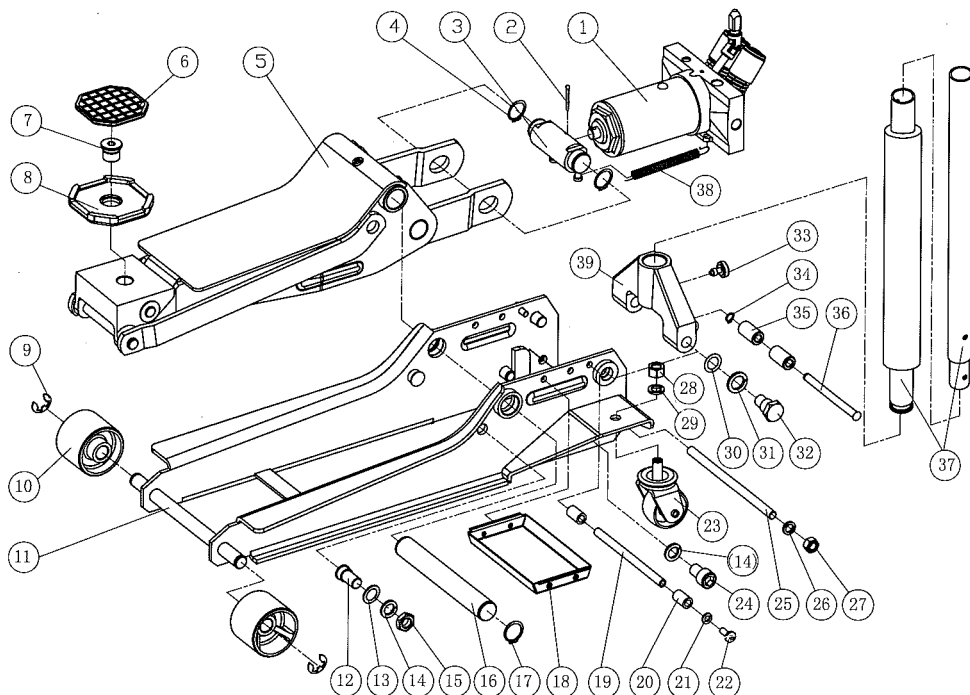


E: info@buttsequipment.com

W: www.buttsequipment.com

REPLACEMENT PARTS

Not all components of the jack are replacement items, but are illustrated as a convenient reference of location and position in the assembly sequence. When ordering parts, give model number, part number and parts description. Call or write for current pricing: Torin Jacks, Inc. Customer Service, 4355 E. Brickell St., Ontario, CA 91761 Phone: (909)390-8588; E-mail: info@torinjacks.com



No.	Parts Description	QTY
1	Power unit	1
2	Split pin	1
3	Connection shaft	1
4	Circlip	2
5	Lift arm assembly	1
6	Rubber saddle	1
7	Saddle bolt	1
8	Saddle	1
9	Clip ring	2
10	Front wheel	2
11	Frame	1
12	Clevis pin	2
13	Washer $\phi 16.5$	2
14	lock washer $\phi 16$	4

No.	Parts Description	QTY
15	Nut M16	2
16	Frame axle	1
17	Circlip	2
18	Plate	1
19	Repelling pole for handle	1
20	Rubber sleeve	2
21	Washer $\phi 8$	2
22	Screw	2
23	Swivel caster	2
24	Hexagon socket head screw	2
25	Repelling pole	1
26	Washer $\phi 12$	2

No.	Parts Description	QTY
27	Nut m12	2
28	Nut m14	2
29	Washer $\phi 14$	2
30	Ring gasket	2
31	Washer $\phi 18$	2
32	Bolt	2
33	Handle socket screw	1
34	Circlip	1
35	Sleeve	2
36	Handle socket shaft	1
37	Handle assembly	1
38	Return spring	2
39	Handle socket	1

For the above use part number BTJ0033/ followed by the number of the following part.