

**CAR & LIGHT COMMERCIAL  
VEHICLE JACKING BEAMS FOR  
PITS & LIFTS**

**Rated load 2000 Kg - 2800 Kg**

**Operating Instructions &  
Spares List**

**HPJ2.0**

**MPJ2.0**

**HPJ2.8**

**MPJ2.8**



**BUTT**

**Established 1971**

**Brunel Close, Brunel Industrial Estate,  
Harworth, Doncaster DN11 8QA**

**Tel. 01302 710868**

**[www.jhmbuttco.com](http://www.jhmbuttco.com)**



**Thank you for selecting a JHM Butt product. I trust that it will provide you with many years of safe, reliable operation.**

**Always keep this document safe and easily accessible: following risk assessment it contains important instructions on the safe installation, use and maintenance of your new jacking beam as well as certificates validating its adherence to EC/UKCA and Health & Safety requirements, and which you are advised to retain for insurance purposes.**

**If you do have any queries or problems, one of our technical staff will be always pleased to assist you. Simply call us on 01302 710868 and ask for our technical sales department.**

**JHM Butt supports all environmental protection acts and has a duty of care policy in operation at all times. There are no hazardous materials contained in any JHM Butt products.**

**Our reputation has been established through customer service and product quality. Never hesitate to contact us about any matter concerning your JHM Butt jacking beam.**

**Yours sincerely**

A handwritten signature in black ink, appearing to read 'D. BEAN' in a cursive, stylized font.

**Daniel Bean**

**Director**

# **HEALTH AND SAFETY**

**This product should only be used by trained and qualified personnel.**

**Your JHM Butt Jacking Beam is designed to conform to all relevant EC/UKCA directives on its safe use in the workplace and has been subjected to a risk assessment. The enclosed certificate is provided for Health & Safety purposes and validates that conformity.**

## **CERTIFICATE OF TEST.**

**Manufacturers of equipment and employers have a duty of care to ensure all machinery is safe for use in the workplace. A separate test and examination certificate is provided for insurance purposes and is valid for 12 months from the time of issue.**

## **WARRANTY.**

### **5 YEAR WARRANTY**

**JHM Butt warrants your product for five years.**

## **OPERATION.**

**This section details the correct procedures for installing, using, and maintaining your JHM Butt product. The safety precautions **MUST** be read before commissioning and operating this Jacking Beam.**

## **PARTS LIST.**

**A comprehensive list of all parts. For total safety and reliability, we recommend that **ONLY** genuine JHM Butt parts are used on our products.**

## **SERVICE HISTORY.**

**This section documents the dates and details of annual inspections, service, repairs and re- testing of the Jacking Beam.**

## **WARRANTY**

All 5-year warranties must be registered with JHM Butt by completing the warranty registration card.

### **JHM Butt GUARANTEE**

We guarantee our products to be free from defects due to faulty material or workmanship. The period of the guarantee commences from the date of delivery to the purchaser, either by us or by our distributor as specified.

### **WARRANTY TERM 5 YEAR**

The prescribed maintenance schedule must be carried out in order to qualify for the 5-year term of the warranty; failure to do so will void the warranty term. All maintenance must be recorded in order to support a claim if necessary.

### **WEEKLY**

Keep jack in a clean condition. Air operated version must be fed by clean dry air. Keep air hose connections clean.

### **MONTHLY**

Clean down the jack, keep it free from grease and grime.

### **ANNUALLY**

Check pump, rams, and hoses for signs of oil leaks. Ensure all bolts and fixings are tight.

### **THIRD YEAR**

Full service and test to be carried out by authorized service agent or by JHM Butt, including replacement of seals and packings, inspection of parts and test.

### **WHAT IS COVERED**

Our liability is limited to the replacement of parts found to be defective and making good defects found within the prescribed period arising solely from faulty materials or bad workmanship in the products of our own manufacture, properly used solely for the purposes for which they were designed and intended.

We do not supply Loan Jacks.

### **CLAIMS**

All claims should be notified to JHM Butt sales department by telephone, fax or email who will authorize necessary repairs or the replacement of pump or rams. We or our agents are in no circumstances liable for any consequential loss or damage arising through any defect in our product.

# CERTIFICATE OF TEST AND EXAMINATION

For Insurance Purposes

Scissor Jacking Beam: Model: \_\_\_\_\_

Serial Number: \_\_\_\_\_

Rated Load - Max SWL: \_\_\_\_\_

Date of Test: \_\_\_\_\_

Signature of Tester: \_\_\_\_\_

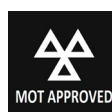
Name of Tester: \_\_\_\_\_

This is to certify that the above equipment has been subjected to a Load Test without showing any defect and is recommended for the Safe Working Load stated above.

IT IS YOUR RESPONSIBILITY TO ENSURE THAT THIS TOOL IS USED CORRECTLY



JHM BUTT & CO LIMITED  
Brunel Close, Brunel Industrial Estate, Harworth, Doncaster DN11 8QA,  
England Telephone 01302 710868  
Web site - [www.jhmbuttco.com](http://www.jhmbuttco.com)  
Email - [equipmentsales@jhmbuttco.com](mailto:equipmentsales@jhmbuttco.com)



## EC Declaration of Conformity

BUSINESS NAME

ADDRESS

JHM BUTT & CO LIMITED

Brunel Close, Brunel Industrial Estate,  
Harworth, Doncaster DN11 8QA

DECLARES THAT THE MACHINERY DESCRIBED AS:

Scissor Jacking Beam: Hand or Air Operated

CONFORMS TO THE FOLLOWING:

2006/42/EC Machinery Directive

EN 1494 Lifting Equipment Regulations

AND COMPLIES WITH THE REQUIREMENTS OF HEALTH AND SAFETY.



Daniel Bean

Director

Signed for and on behalf of JHM Butt.



JHM Butt. is totally committed to meeting and where possible, exceeding all CE requirements concerning the safe design, installation, and operation of its equipment.

## UK Declaration of Conformity

BUSINESS NAME

ADDRESS

JHM BUTT & CO LIMITED

Brunel Close, Brunel Industrial Estate,  
Harworth, Doncaster DN11 8QA

DECLARES THAT THE MACHINERY DESCRIBED AS:

Scissor Jacking Beam: Hand or Air Operated

CONFORMS TO THE FOLLOWING:

The Supply of Machinery (Safety) Regulations 2011

BS EN1494:2001 Lifting Equipment Regulations

AND COMPLIES WITH THE REQUIREMENTS OF HEALTH AND SAFETY.



Daniel Bean

Director

Signed for and on behalf of JHM Butt.

## **SAFETY PRECAUTIONS**

**These safety precautions are to be used as information additional to all Health & Safety rules and standards in force at the time of reading, and supplementary to all Employer and Employee Health & Safety Rules at your place of work.**

**DO NOT exceed the manufacturer's rated capacity stated on the Jacking Beam. This is dangerous and can result in personal injury and/or damage to the Jack or to the vehicle.**

**DO NOT modify, add, or remove any component as this may render the Jacking Beam unsafe in use and will invalidate the Warranty.**

**NEVER adjust or tamper with any internal pressure relief valve.**

**SERVICING AND REPAIRS. JHM Butt approved engineer should carry out servicing and repairs. Details of our inspection and service contracts are available on request.**

**USE ONLY genuine JHM Butt spare parts and seals.**

**DO NOT damage the Ram connecting Hose(s) or allow them to come into contact corrosive materials such as brake fluids or paints.**

**REGULARLY INSPECT the Hose(s) for wear or damage.**

**NEVER disconnect a Hose when the Jacking Beam is in use.**

**TOP UP with an oil grade to ISO15.**

**DO NOT use brake or clutch fluids. These will damage the seals.**

**KEEP fingers clear of all moving parts of the jacking beam when it is being operated.**



# **INSTALLATION**

**It is essential that all installers, operators, and maintenance personnel MUST read and fully understand the installation, maintenance and operating procedures BEFORE commissioning and operating this Jacking Beam.**

**Where the procedure demands the use of suitable lifting equipment, these operations must be correctly supervised and be in line with your company's Health and Safety policy.**

## **CHECK FOR DAMAGE**

**The Jacking Beam is shipped, shrink-wrapped on a wooden pallet. Carefully unpack the Jacking Beam and box of accessories. If any damage has been sustained during transit, contact your supplier immediately.**

## **CHECK OPERATION**

**Check the operation of the Jacking Beam and the operating controls THOROUGHLY before lifting a vehicle. Become familiar with function and fit of the lifting accessories.**

## **CONNECT THE AIR SUPPLY**

**Use a PCL Quick Release Connector or similar.**



## **OPERATION 1**

**Installation** - It will be necessary to adjust the Jacking Beam to suit the width of the Pit or Lift.

**Jacking Beams fitted with 'sliding' support arms.**

Adjust the position of the support arms to fit onto the Lift platforms.

**Warning:** It is imperative that these 'sliding' support arms are never fixed and are always allowed to slide freely in the Jacking Beam frame to accommodate any sideways movement of the Lift platforms.

**Jacking Beams fitted with 'fixed' support arms.**

With the beam pump handle or operating controls facing you, unscrew and remove the two support arm positioning screws (M8 socket cap screws) at the front left and right. Loosen, but do not remove, the two in slots at the rear.

Then slide the support arms inwards or outwards to fit onto the Lift or Pit.

Replace the M8 socket cap screws into the front support arm holes that are now in line in one of the four slots on the left and right sides. Now tighten the rear left and right socket cap screws.

**CHECK THAT THE JACKING BEAM** will move freely along the length of the Lift or Pit. Re-adjust if necessary.

**OIL** the pump handle pivot and link pins before using hand operated Jacking Beams.

**CHECK THE OPERATION** of the Jacking Beam and become familiar with the lifting, lowering and safety catch controls before lifting a vehicle.

**BEFORE LIFTING A VEHICLE** ensure that the road wheels are chocked to prevent any movement of the vehicle. Adopt this procedure as a good working practice.

**CONNECT THE AIR SUPPLY** using a PCL Quick Release Connector or similar.

It is essential that all installers, operators and maintenance personnel **MUST** read and fully understand the installation, maintenance and operating procedures **BEFORE** commissioning and operating this Jacking Beam.

### **Safety precautions**

These safety precautions are to be used as information additional to all Health & Safety rules and standards in force at the time of reading, and supplementary to all Employer and Employee Health & Safety Rules at your place of work.

**DO NOT** exceed the manufacturer's rated capacity stated on the Jacking Beam. This is dangerous and can result in personal injury and/or damage to the beam or to the vehicle.

**DO NOT** modify, add or remove any component as this may render the Jacking Beam unsafe in use and will invalidate the Warranty.

**NEVER** adjust or tamper with any internal pressure relief valve.

**SERVICING AND REPAIRS.** A JHM Butt approved engineer should carry out servicing and repairs. Details of our inspection and service contracts are available on request.

**USE ONLY** genuine JHM Butt spare parts and seals.

**DO NOT** damage the Ram connecting Hose or allow it to come into contact with corrosive materials such as brake fluids or paints.

**REGULARLY INSPECT** the Hose for wear or damage.

**NEVER** disconnect the Hose when the Jacking Beam is in use.

**TOP UP** with an oil grade to ISO15.

**DO NOT** use brake or clutch fluids. These will damage the seals.

**KEEP** fingers clear of all moving parts of the Jacking Beam when it is being operated.

**DO NOT** disable or tamper with the safety lock device.

**CHECK FOR DAMAGE** The Jacking Beam is shipped shrink-wrapped on a wooden pallet. Carefully unpack the Beam and box of accessories. If any damage has been sustained during transit contact your supplier immediately.

# OPERATION 2

## Operating Instructions

**ALWAYS ENSURE** that the Jacking Beam is in the fully lowered position before driving a vehicle over the inspection pit or onto the lift. This will prevent damage to your jack and the vehicle. Always check the ground clearance of cars fitted with low front skirts or spoilers.

**CHOCK WHEELS** of the vehicle before lifting commences.

**TO RAISE THE BEAM - HAND OPERATED JACKING BEAMS:** Close the Release Valve by turning the Lever clockwise and then operate the Pumping Handle to and from until the desired height is reached.

**TO RAISE THE BEAM - AIR OPERATED JACKING BEAMS:** Close the Release Valve by turning the Lever clockwise and press the Push Button located on the right-hand side of the Jacking Beam until the desired height is reached.

Releasing the Push Button stops the Power Pack.

**SAFETY CATCH** The Jacking Beam has a built in two level Safety Catch which will engage automatically as the Beam is raised thus protecting the operator against accidental lowering by locking the Beam in a raised position. This provides a stable work platform when carrying out 'wheels off servicing', reducing the need for axle stands or other blocks.

**PRIOR TO LOWERING THE BEAM,** ensure that all tools and components have been removed from the lift, pit and work area.

### TO LOWER THE JACKING BEAM

**1** Raise the Beam a little to allow the Safety Catch to be disengaged.

**2** Rotate the Safety Catch Lever\* fully clockwise with your right hand and turn the Release Valve Lever\* a little anticlockwise with your left hand to commence lowering. \* Both levers must be operated together in order to fully lower the Beam.

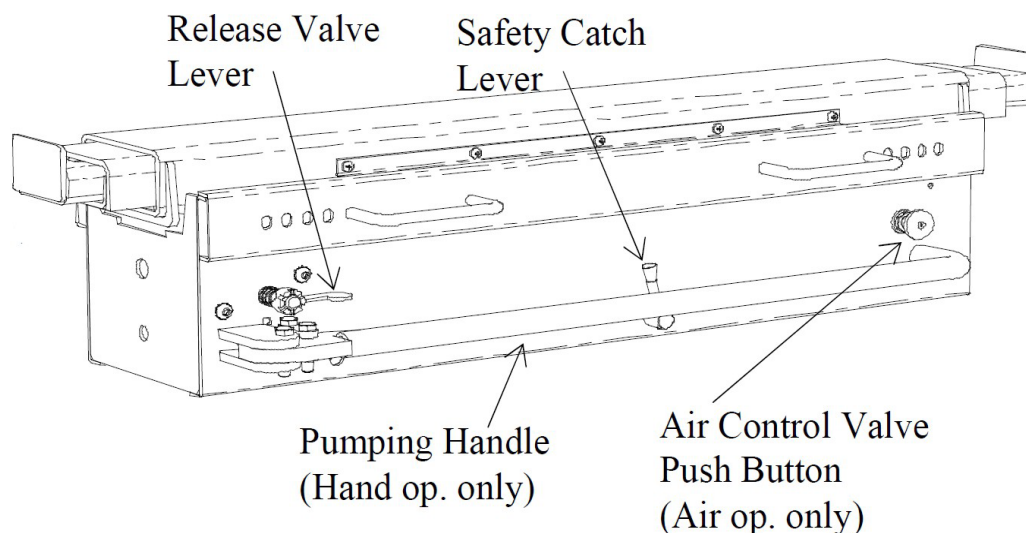
**3** Control the rate of descent by the position of the Release Valve Lever.

**4** If the Beam locks prematurely during descent, close the Release Valve and raise the Beam a little before repeating the lowering process. **5** If the Beam locks prematurely during descent, close the Release Valve and raise the Beam a little before repeating the lowering process.

**HOSE BURST VALVE.** The Jacking Beam is fitted with a hose burst valve. This will prevent accidental lowering of the beam in the unlikely event of a sudden pressure loss. The valve may operate if the Jacking Beam is lowered too quickly. Should this occur, close the Release Valve and raise the Beam a little before repeating the lowering process.

### EMERGENCY STOP

Disconnect the air supply by releasing the Quick Release Connector at the right-hand rear of the frame.



**Diagram showing control features**

# Maintenance

**TO EXTEND THE SERVICE LIFE** of your JHM Butt Jacking Beam and ensure its safe,

reliable operation at all times, we recommend the following: -

**KEEP ALL WORKING PARTS** free from grit, road grime and water. These are the cause of most faults to the hydraulic system.

**Oil The Pivot Pins** and moving parts of the scissor assembly at six-weekly intervals.

**ENSURE** that the air vent in the Power Pack filler plug is clear. – (Hand operated beams only)

CHECK that the safety limit pin in assembly 1532A & 1532V is flush with outer thread prior to use. (see page 14)

**KEEP THE** Pit or Lift rails free from the build-up of grease and road grime.

**HYDRAULIC SYSTEM** Should it be necessary to top up the hydraulic fluid use ISO 15. NEVER use brake or clutch fluids. These will cause serious damage to the seals and result in the failure of the hydraulics.

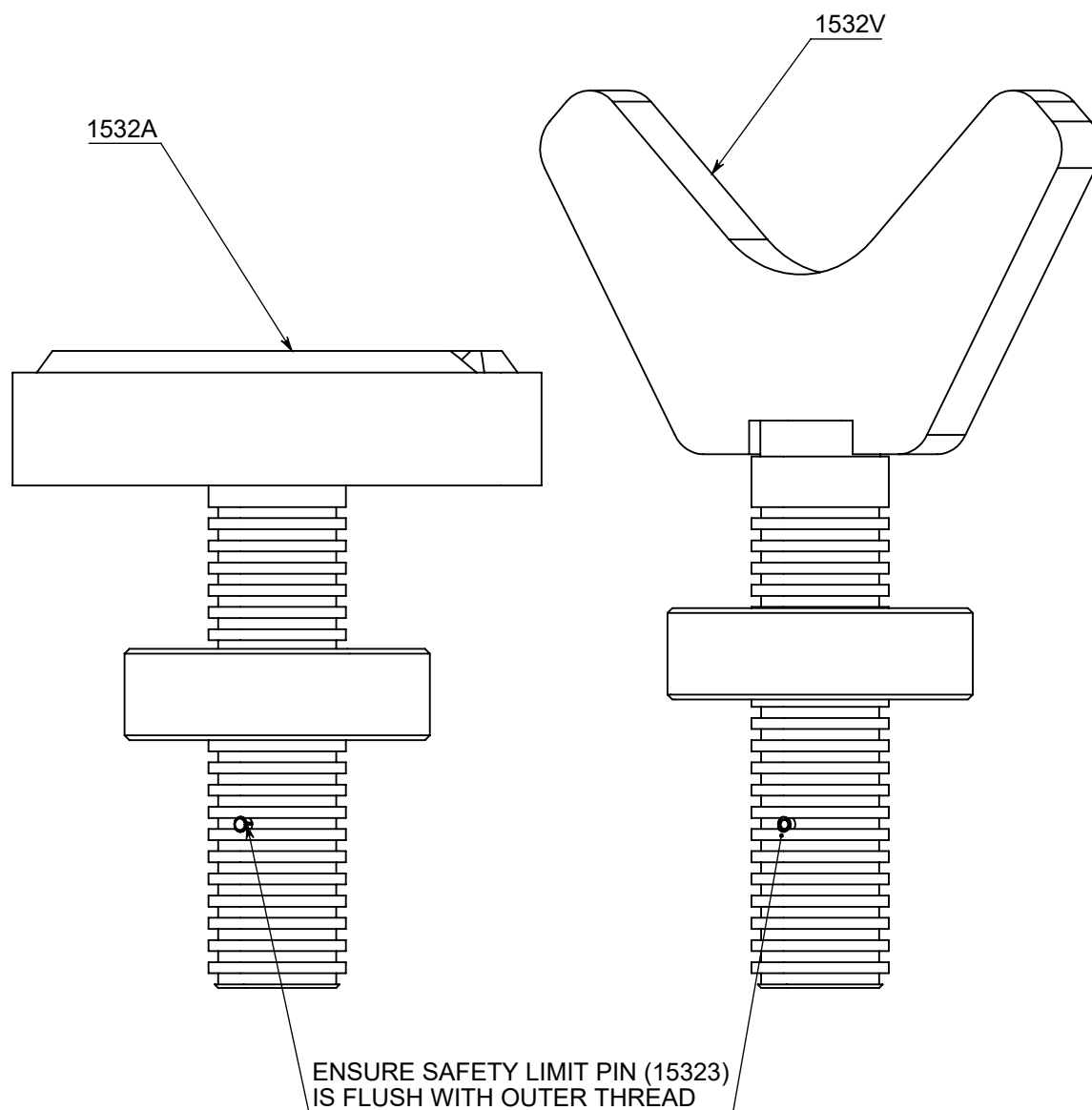
**ANNUAL INSPECTIONS** of the Jacking Beam should be carried out and any worn or damaged parts replaced by a competent person, ideally one trained by JHM Butt. JHM Butt engineers are authorised to re-issue a Certificate of Test and Examination for Insurance and/or Health & Safety purposes.

**REPORT ANY FAULTS** or leaks to the person elected responsible for the maintenance of your workshop equipment. It is a requirement of the Health & Safety Executive that **ALL EQUIPMENT** is maintained in good working order at all times.

**SHOULD YOU EXPERIENCE** any problem with your JHM Butt Jacking Beam, or if you simply seek advice on any aspect of its correct maintenance, please contact our service department for assistance.

**JHM BUTT** support all environmental protection acts and issues. We have a duty of care policy in operation at all times. There are no hazardous materials contained in any JHM Butt product. When your Jacking Beam reaches the end of its service life, we offer a free disposal service. Simply return the Jacking Beam to JHM Butt, clearly stating that it is for disposal, we will ensure that it is disposed of in a correct and controlled manner that complies with all environmental protection acts.

## 1532A & 1532V

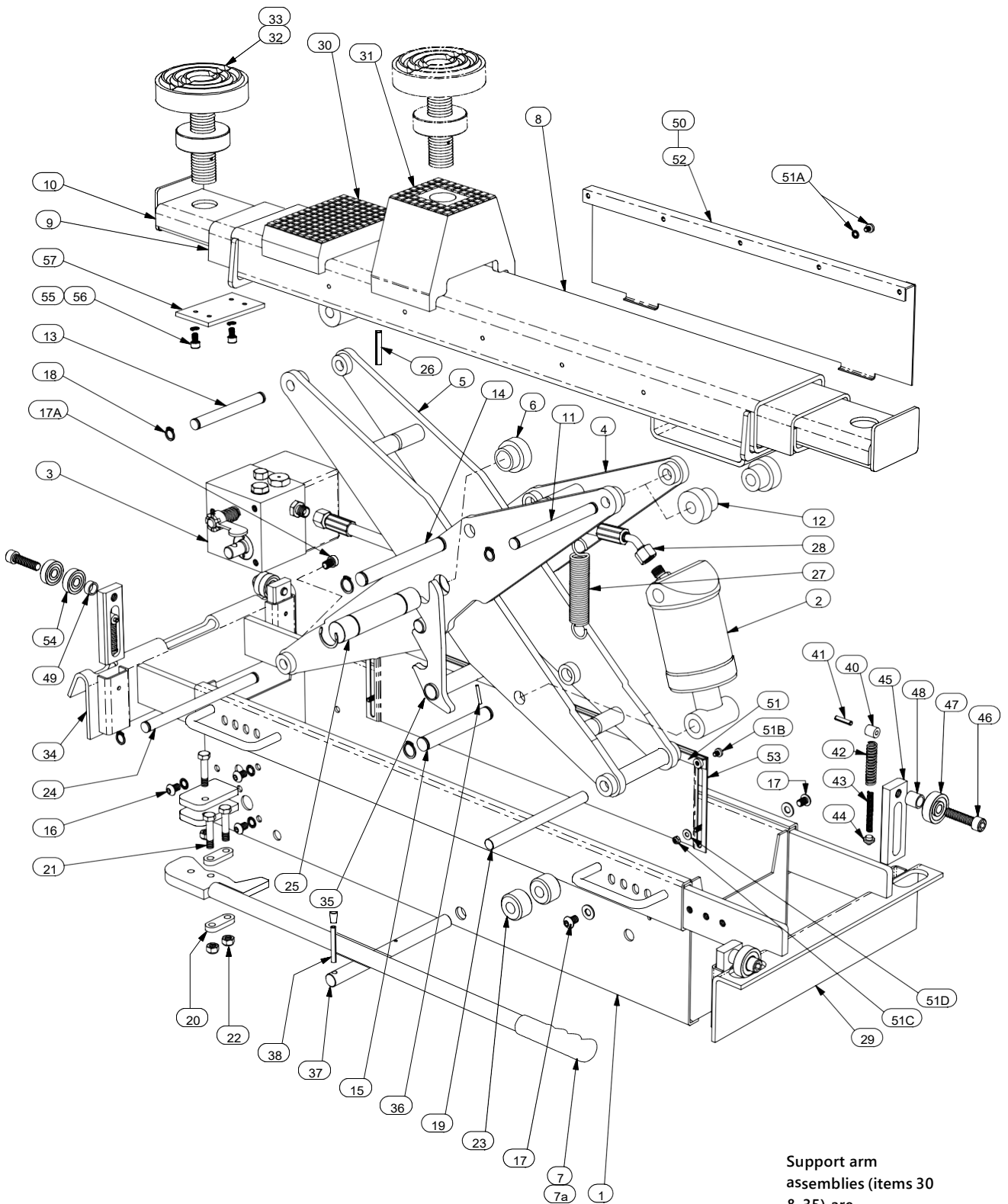


SAFETY LIMITING PIN IS USED TO ENSURE THERE IS  
MAXIMUM LOCATION IN THE EXTENSION ARM.

## Technical Data/Noise Levels

Technical Data				
	Hand operated		Air operated	
Model Number	HPJ2.0	HPJ2.8	MPJ2.0	MPJ2.8
Max Lifting Capacity - tonne	2.0	2.8	2.0	2.8
Weight – Kg	87	113	87	113
Air Pressure - bar	-		6 – 8.5	
Air Flow – S. cu m/min	-		0.42	
Hydraulic pressure - bar	248	152	248	152
Hydraulic Fluid – Litre (grade iso 15)	0.45	0.85	0.45	0.75
Ram Seal Kit	1302k	1502k	1302k	1502k
Power Pack Seal Kit	1453K		1653K	
Models MPJ2.0 - Rated Load 2.0 tonne / air supply 6.0 – 8.5 bar				
DECLARED DUAL-NUMBER NOISE EMISSION VALUES In accordance with ISO 4871				
Measured A-weighted sound power Level, $L_{WA}$ (ref. 1pW) in decibels	Operating Mode 1		Operating Mode 2	
	85		85	
Uncertainty, $K_{WA}$ , in decibels	2		2	
Measured A-weighted emission sound pressure level, $L_{pA}$ (ref. 20 uPa) at the operators position in decibels	83		83	
Uncertainty, $K_{pA}$ , in decibels	2		2	
Values determined according to noise test code given in ISO 4871, using the basic standard ISO 11201.				
Note – The sum of a measured noise emission value is associated uncertainty represents an upper boundary of the range of values which is likely to occur in measurements.				
Models MPJ2.8 - Rated Load 2.8 tonne / air supply 6.0 – 8.5 bar				
DECLARED DUAL-NUMBER NOISE EMISSION VALUES In accordance with ISO 4871				
Measured A-weighted sound power Level, $L_{WA}$ (ref. 1pW) in decibels	Operating Mode 1		Operating Mode 2	
	85		85	
Uncertainty, $K_{WA}$ , in decibels	2		2	
Measured A-weighted emission sound pressure level, $L_{pA}$ (ref. 20 uPa) at the operators position in decibels	83		83	
Uncertainty, $K_{pA}$ , in decibels	2		2	
Values determined according to noise test code given in ISO 4871, using the basic standard ISO 11201.				
Note – The sum of a measured noise emission value is associated uncertainty represents an upper boundary of the range of values which is likely to occur in measurements.				

## 2.0 TONNE HAND OPERATED SCISSOR JACKING BEAM Part Number H1300



Support arm  
assemblies (items 30  
& 35) are  
illustrative only and  
will usually be special  
to suit your lift / pit.

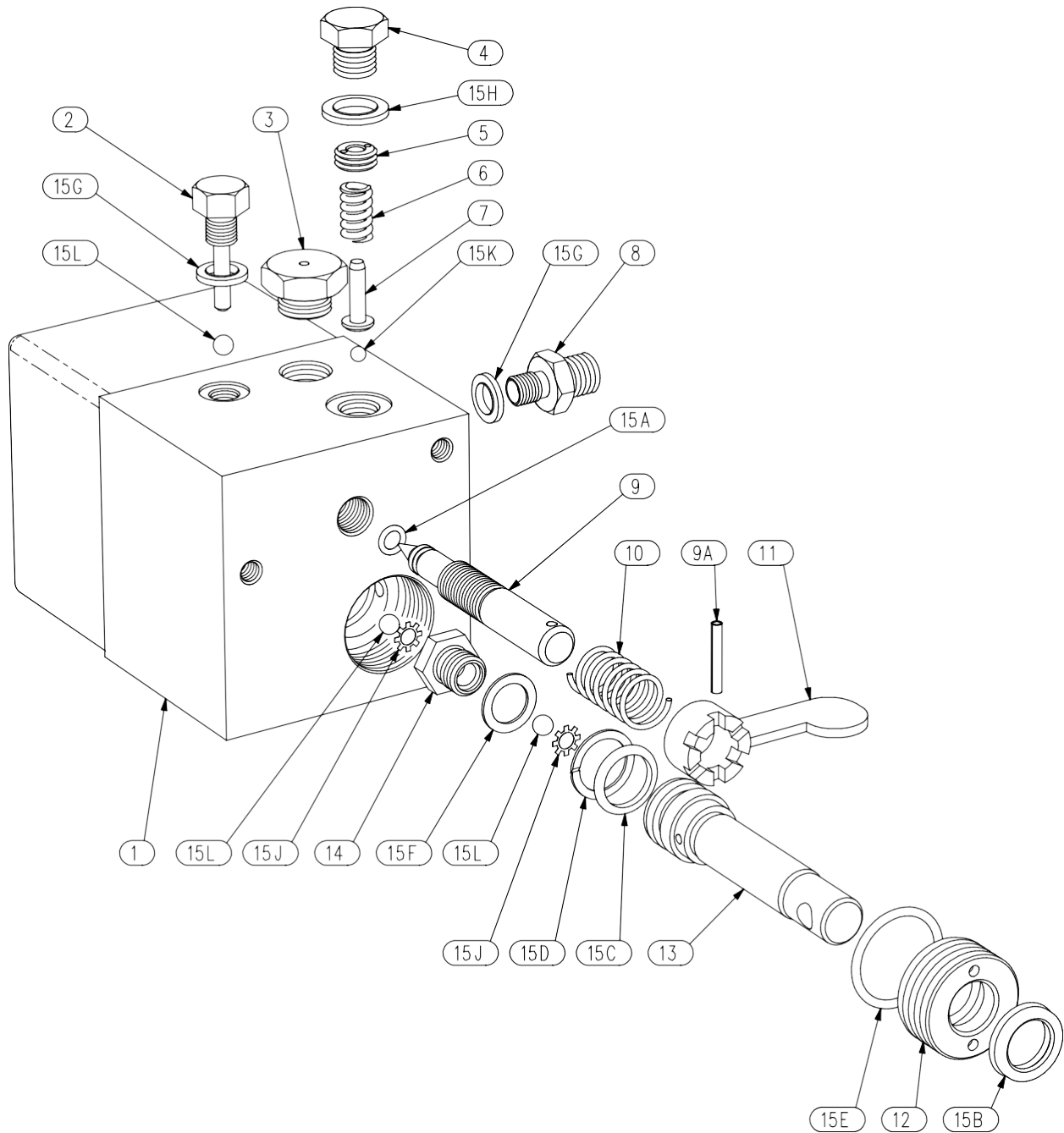


## 2.0 TONNE HAND OPERATED SCISSOR JACKING

### BEAM Part Number H1300

ITEM No.	DESCRIPTION	QTY	PART No.
1	FRAME	1	HSN1301
2	RAM ASSEMBLY COMPLETE	1	H1402
	SERVICE EXCHANGE RAM	1	1302LE
	RAM SEAL KIT	1	1302K
3	POWER PACK ASSEMBLY COMPLETE	1	HSN1303
	SERVICE EXCHANGE POWER PACK	1	1303E
	PUMP SEAL KIT	1	1103K
4	OUTER SCISSOR	1	1304SB
5	INNER SCISSOR	1	1305SB
6	OPERATING HANDLE	1	SN1306R
7	TOP BEAM	1	L1306DEN
8	EXTENSION ARM - INNER	2	1308DE
9	EXTENSION ARM - OUTER LHS	1	T1309DEL
	EXTENSION ARM - OUTER RHS	1	T1309DER
10	TOP ROLLER AXLE	1	1309
11	TOP ROLLER	2	1310
12	BEAM PIVOT PIN	1	1311
13	CYLINDER PIVOT PIN	1	1312
14	PISTON PIVOT PIN	1	1313
15	PUMP MOUNTING BOLT SET	8	SN1314
16	SUPPORT ARM BOLT SET – FLAT ARMS	4	133310
16A	SUPPORT ARM STOP BOLT – HOOK ARMS (Fit No Washers)	2	133404
17	CIRCLIP SET	1	1316
18	BOTTOM ROLLER AXLE	1	1317
19	PLUNGER LINK	2	1118
20	PLUNGER LINK PIN	3	1119
21	NYLOC NUT	3	M8 NYLOC
22	BOTTOM ROLLER	2	1320
23	FIXED AXLE	1	1321
24	SCISSOR PIVOT PIN	1	1322SB
25	EXTENSION ARM STOP PIN	2	1123
26			
27	RETURN SPRING	1	1124
28	HYDRAULIC HOSE	1	SN1325
29	SUPPORT ARM (FLAT TYPE) – Typical	1pr	Quote Support Arm Pt No.
30	RAISER BLOCK – SHORT - 25mm	2	1526
31	RAISER BLOCK – TALL – 95/78mm	2	1527
32	LIFTING PAD ASSEMBLY	2	1532A
33	REPLACEMENT RUBBER PAD	2	15324
34	SUPPORT ARM (HOOK TYPE) – Typical	1pr	Quote Support Arm Pt No.
35	LOCKING CATCH	1	H1428
36	RETAINING PIN	1	110308
37	LOCKING CATCH SPINDLE	1	1329
38	RELEASE LEVER	1	1331
39	PLAIN WASHER	2	M8 WASHER
40	SPRING STOP	4	133305
41	RETAINING PIN	4	133307
42	OUTER SPRING	4	1333081
43	INNER SPRING	4	1333082
44	SPRING PAD	4	133304
45	AXLE BRACKET	4	133302
46	ROLLER AXLE	4	Quote Support Arm Pt No.
47	ROLLER (FLAT SUPPORT) Ø35mm	4	133309
48	ROLLER SPACER (FLAT SUPPORT) –	4	Quote Support Arm Pt No.
49	ROLLER SPACER (HOOK SUPPORT) -	4	Quote Support Arm Pt No.
50	LOWER FINGER GUARD	2	H143002
51	FINGER GUARD SET (Containing Items 50, 51A to 51D, 52 & 53)	1	H1430
51A	UPPER GUARD SCREW & INTERNAL SHAKEPROOF WASHER	10	)
51B	GUIDE STRIP RETAINING SCREW	4	)
51C	GUARD RETAINING NUT	4	) 133804
51D	WASHER FOR ABOVE	4	)
52	GUIDE STRIP	2	133003L
53	UPPER FINGER GUARD	2	H14300
54	ROLLER (HOOK TYPE SUPPORT) Ø30mm	8	1133409
55	M6x12 SOCKET HEAD CAP SCREW	4	15076DE
56	M6 SINGLE COIL SPRING WASHER	4	15078DE
57	STOP PLATE	2	15075DE
58	BOSS – CENTRE PIVOT	2	13042
59	HANDLE MOUNTING ASSEMBLY	1	SN132
60	HYDRAULIC FITTINGS KIT	1	3
61	PUMP OUTLET PIPE	1	SN162
62	BONDED WASHER	1	4

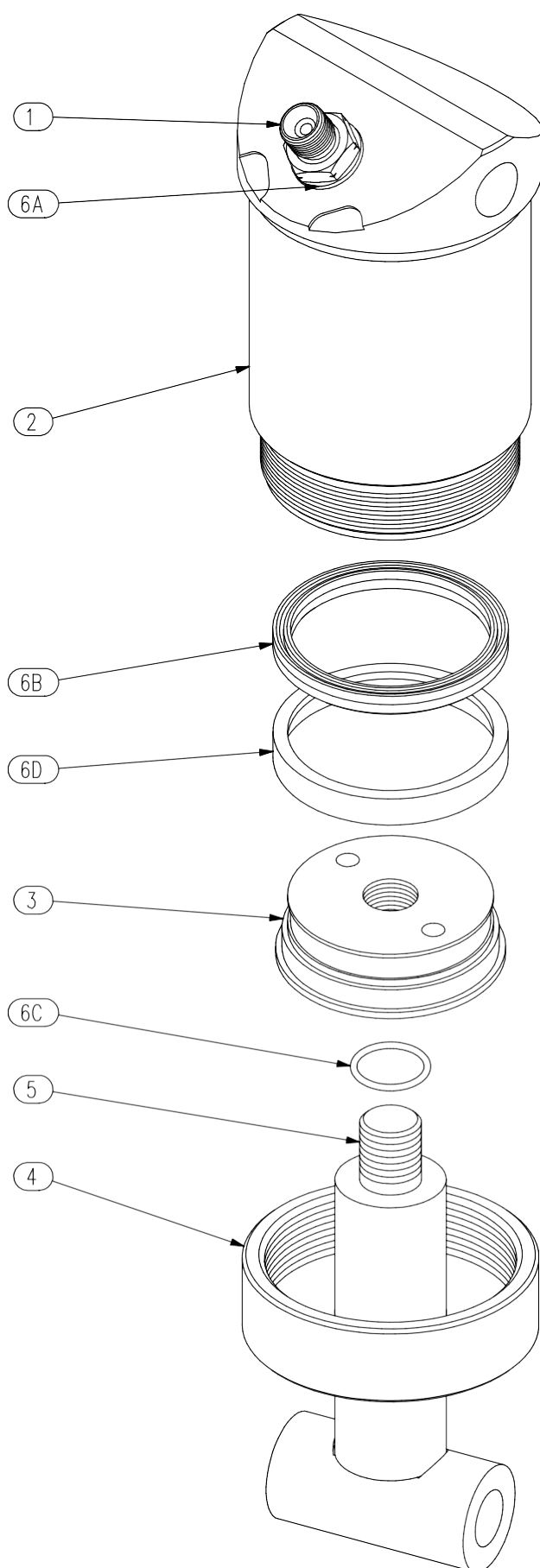
## 2.0 TONNE HAND OPERATED POWER PACK ASSEMBLY Part Number H1303



2.0 TONNE HAND OPERATED POWER PACK ASSEMBLY Part  
Number H1303

<u>ITEM No.</u>	<u>DESCRIPTION</u>	<u>QTY</u>	<u>PART No.</u>
1	VALVE BLOCK ASSEMBLY	1	H130301
2	DELIVERY VALVE PLUG	1	110303
3	FILLER PLUG	1	110312
4	RELIEF VALVE PLUG	1	110316
5	RELIEF VALVE ADJUSTING COLLAR	1	110315
6	RELIEF VALVE SPRING	1	110314
7	RELIEF VALVE PISTON	1	130313
8	OUTLET UNION	1	110311
9	RELEASE SPINDLE	1	110304
9A	LEVER RETAINING PIN	1	110308
10	RELEASE LEVER	1	110310
11	SPRINGRELEASE LEVER	1	110307
12	PLUNGER GLAND	1	110302
13	PUMP PLUNGER	1	110305
14	BY-PASS VALVE SEAT	1	110306
15	POWER PACK SEAL KIT (Containing Items 15A to 15L)	1	1103K
15A	'O' RING	1	
15B	'U' RING	1	
15C	'D' RING	1	
15D	'A.E.'	1	
15E	RINGO'	1	
15F	RING	1	
15G	COPPER WASHER	2	
15H	BONDED WASHER	1	
15J	BONDED WASHER	2	
15K	STAR WASHER	1	
15L	RELIEF VALVE BALL	3	

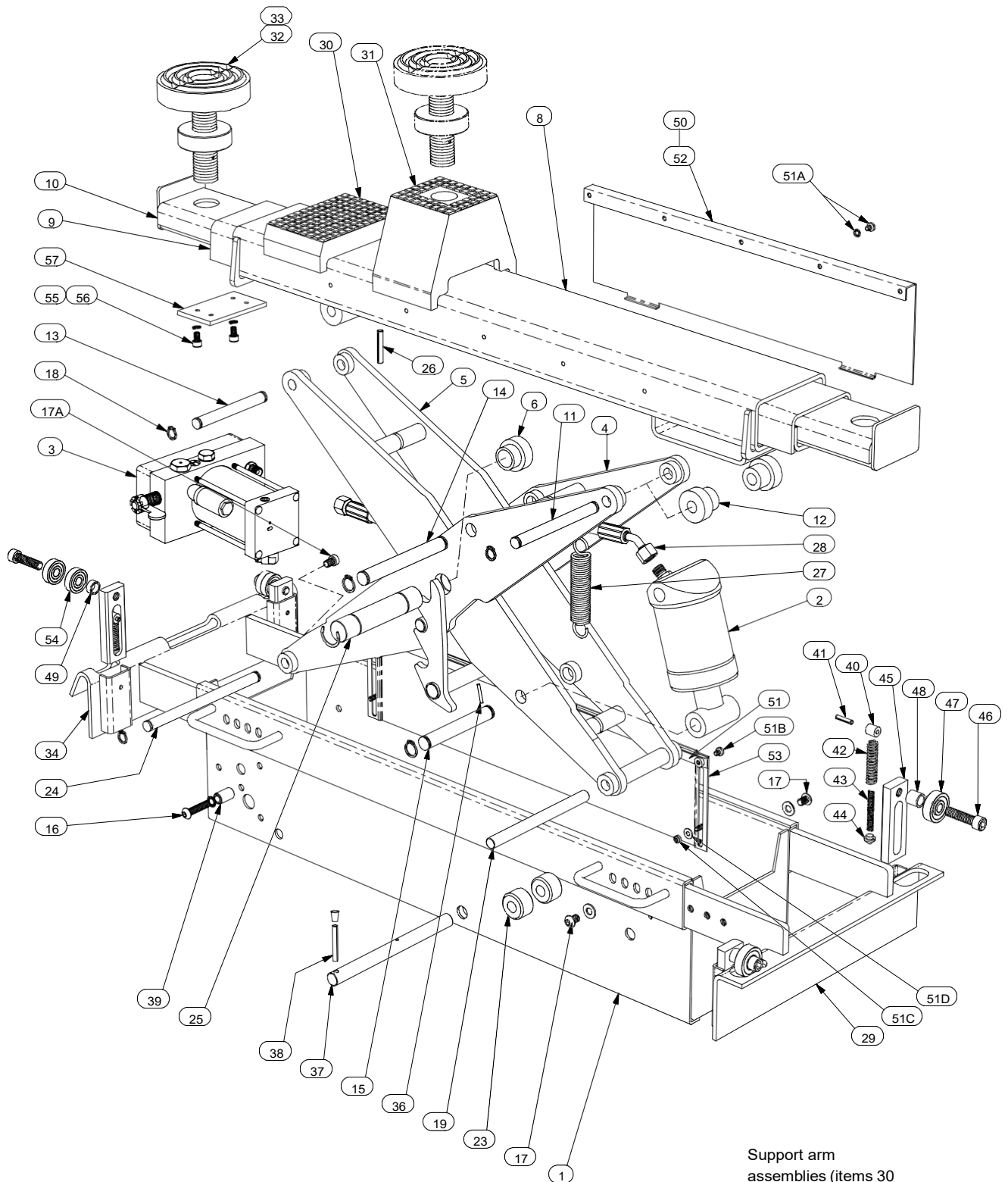
## 2.0 TONNE RAM ASSEMBLY Part Number H1402



## 2.0 TONNE RAM ASSEMBLY Part Number H1402

<u>ITEM No.</u>	<u>DESCRIPTION</u>	<u>QTY</u>	<u>PART No.</u>
1	UNION / VELOCITY VALVE	1	13025
2	CYLINDER	1	H14021
3	PISTON HEAD	1	13023
4	CYLINDER GLAND	1	H14024
5	PISTON ROD	1	13022
6	RAM SEAL KIT (Containing Items 6A to 6D)	1	1302K
6A	BONDED WASHER	1	
6B	RAM SEAL	1	
6C	'O' RING	1	
6D	GUIDE RING	1	

## 2.0 TONNE AIR OPERATED SCISSOR JACKING BEAM Part Number H1400

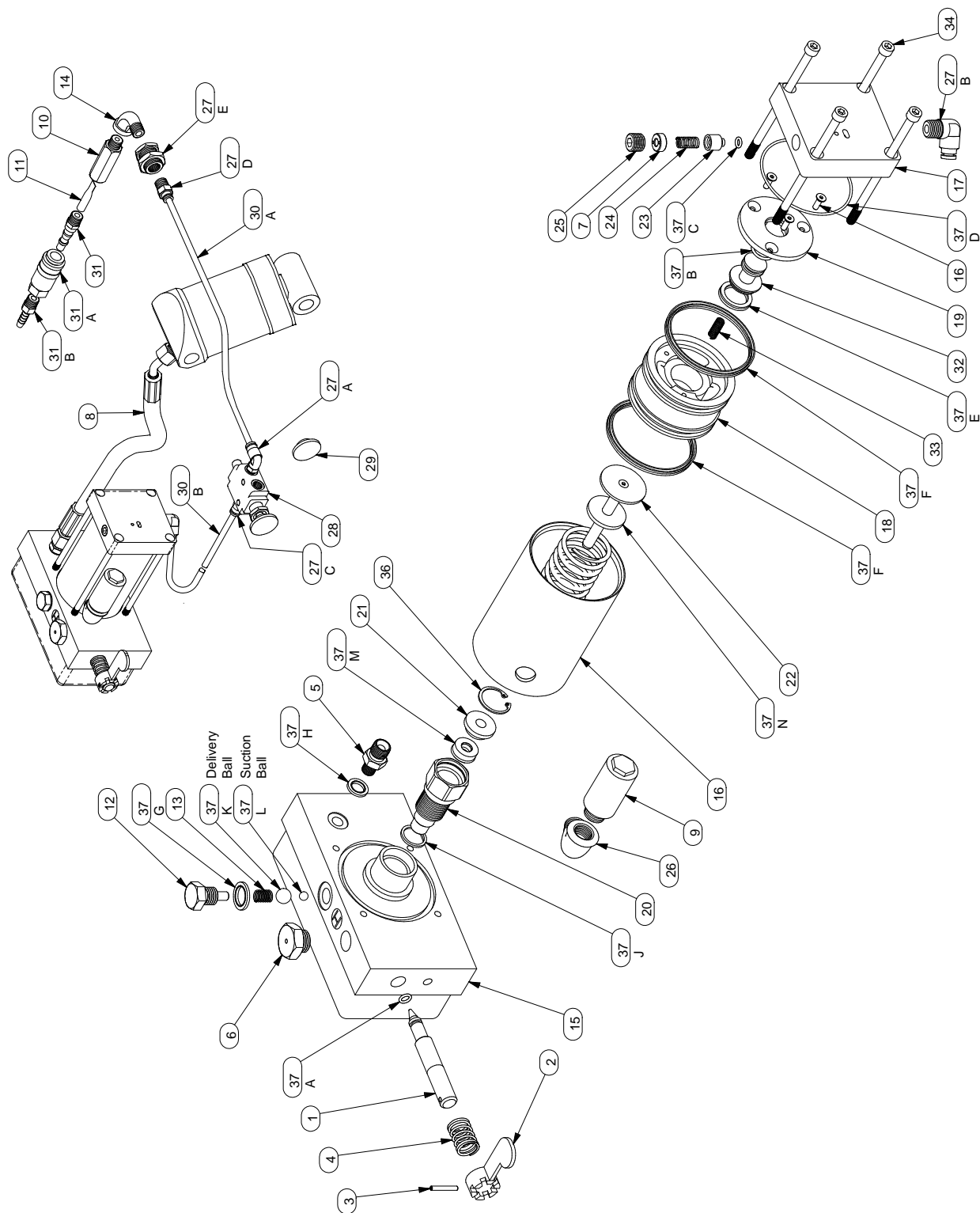


## 2.0 TONNE AIR OPERATED SCISSOR JACKING BEAM Part

### Number H1400

<u>ITEM No.</u>	<u>DESCRIPTION</u>	<u>QTY</u>	<u>PART No.</u>
1	FRAME	1	H1401
2	RAM ASSEMBLY COMPLETE	1	H1402
	SERVICE EXCHANGE RAM	1	H1402E
	RAM SEAL KIT	1	1302K
3	POWER PACK ASSEMBLY COMPLETE	1	H1453
	SERVICE EXCHANGE POWER PACK	1	H1453E
	PUMP SEAL KIT	1	1453K
4	OUTER SCISSOR	1	H1304SB
5	INNER SCISSOR	1	H1305SB
6	BOSS – CENTRE PIVOT	2	13042
7	-		
8	TOP BEAM	1	L1306DE
9	EXTENSION ARM – INNER LHS	2	L1308DEL
	EXTENSION ARM – INNER RHS	2	L1308DER
10	EXTENSION ARM - OUTER LHS	1	L1309DEL
	EXTENSION ARM - OUTER	1	L1309DER
11	RHSTOP ROLLER AXLE	1	1309
12	TOP ROLLER	2	1310
13	BEAM PIVOT PIN	1	1311
14	CYLINDER PIVOT PIN	1	1312
15	PISTON PIVOT PIN	1	1313
16	POWER PACK MOUNTING BOLT SET	1	1214
17	SUPPORT ARM BOLT SET – FLAT ARMS	4	133310
17A	SUPPORT ARM STOP BOLT – HOOK ARMS (Fit No Washers)	2	133404
18	CIRCLIP SET	1	1316
19	BOTTOM ROLLER AXLE	1	1317
20	-		
21	-		
22	-		
23	BOTTOM ROLLER	2	1320
24	FIXED AXLE	1	1321
25	SCISSOR PIVOT PIN	1	1322SB
26	EXTENSION ARM STOP PIN	2	15084
27	RETURN SPRING	1	1124
28	HYDRAULIC HOSE	1	1125
29	SUPPORT ARM (FLAT TYPE) —	1pr	
	Quote Support Arm Pt No.		
30	RAISER BLOCK – SHORT – 25mm	2	1526
31	RAISER BLOCK – TALL- 95/78mm	2	1527
32	LIFTING PAD ASSEMBLY	2	1532A
33	REPLACEMENT RUBBER PAD	2	15324
34	SUPPORT ARM (HOOK TYPE) —	1pr	
	Quote Support Arm Pt No.		
35	LOCKING CATCH	1	H1428
36	RETAINING PIN	1	1531
37	LOCKING CATCH SPINDLE	1	1329
38	RELEASE LEVER	1	1331
39	STOP – RELEASE LEVER	1	1206
40	SPRING STOP	4	133305
41	RETAINING PIN	4	133307
42	OUTER SPRING	4	1333081
43	INNER SPRING	4	1333082
44	SPRING PAD	4	133304
45	AXLE BRACKET	4	133302
46	ROLLER AXLE	4	
	Quote Support Arm Pt No.		
47	ROLLER (FLAT TYPE SUPPORT)	4	133309
	Ø35mm		
48	ROLLER SPACER (FLAT SUPPORT)	4	
	Quote Support Arm Pt No.		
49	ROLLER SPACER (HOOK SUPPORT)	4	
	Quote Support Arm Pt No.		
50	FINGER GUARD SET (Containing Items 51, 51A to 51D, 52 &	1	H1430
51	53)GUIDE STRIP	2	133003L
51A	UPPER GUARD SCREW & INTERNAL SHAKEPROOF WASHER	10	)
51B	GUIDE STRIP RETAINING	4	)
51C	SCREWGARD RETAINING NUT	4	) 133804
51D	WASHER FOR ABOVE	4	)
52	UPPER FINGER GUARD	2	H14300
53	LOWER FINGER GUARD	2	1
54	ROLLER (HOOK TYPE SUPPORT) Ø 30mm	8	H14300
55	M6x12 SOCKET HEAD CAP SCREW	4	15076DE
56	M6 SINGLE COIL SPRING WASHER	4	15078DE
57	STOP PLATE	2	15075DE

## 2.0 TONNE AIR OPERATED POWER PACK ASSEMBLY Part Number H1453

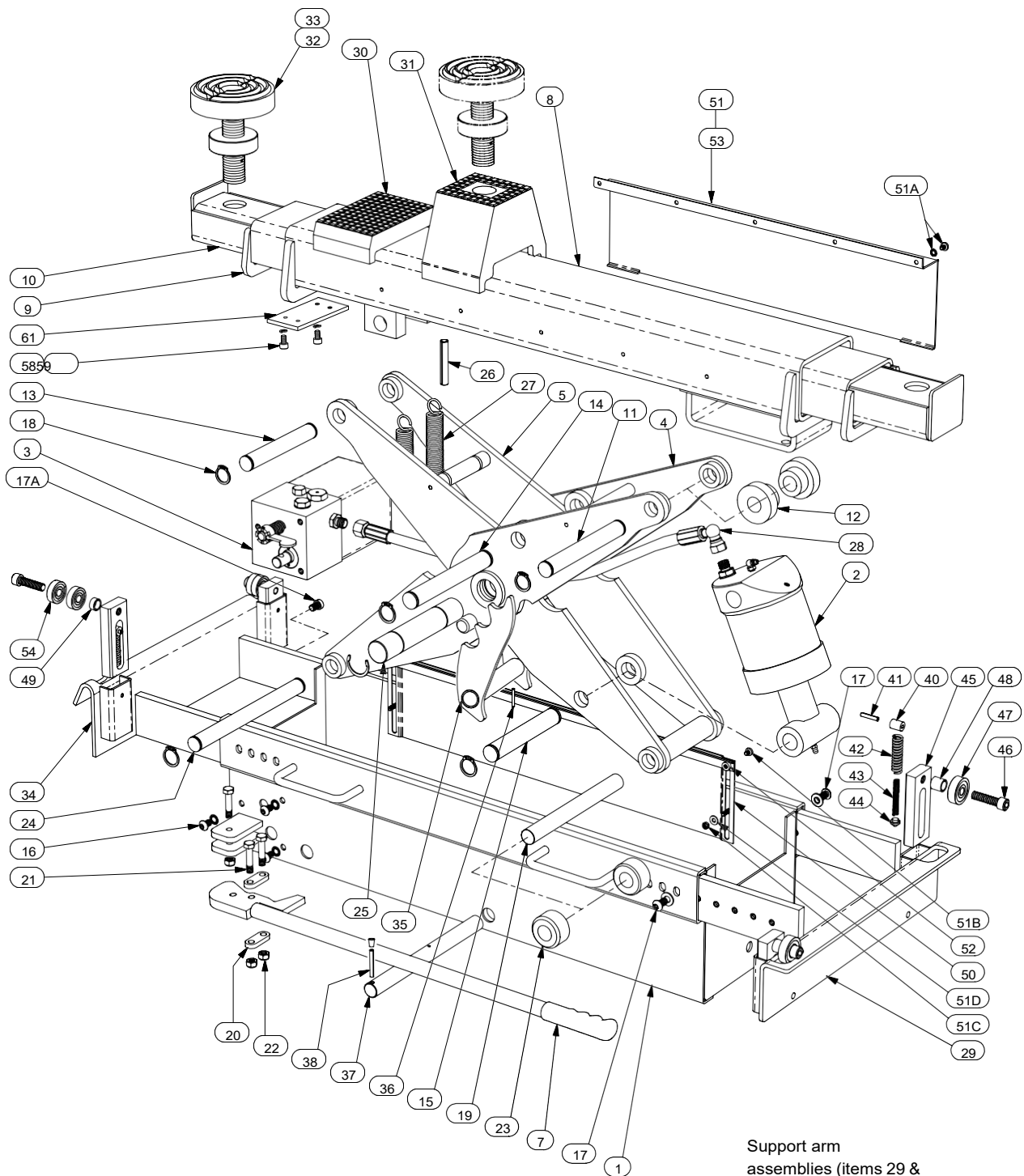




## 2.0 TONNE AIR OPERATED POWER PACK ASSEMBLY Part Number H1453

<u>ITEM No.</u>	<u>DESCRIPTION</u>	<u>QTY</u>	<u>PART No.</u>
1	RELEASE SPINDLE	1	110304
2	RELEASE LEVER	1	110307
3	LEVER RETAINING PIN	1	110308
4	RELEASE LEVER SPRING	1	110310
5	OUTLET UNION	1	110311
6	FILLER PLUG	1	110312
7	RELIEF VALVE ADJUSTING COLLAR	1	110315
8	HYDRAULIC HOSE ASSEMBLY	1	1125
9	SILENCER	1	120315
10	INLET FILTER BODY	1	1210
11	AIR INLET FILTER	1	1211
12	DELIVERY VALVE	1	140302L
13	PLUG	1	140304L
14	DELIVERY VALVE SPRING	1	1427
15	ELBOW	1	H145301
16	VALVE BLOCK ASSEMBLY	1	145302
17	AIR CYLINDER	1	145303
18	CYLINDER AIR CAP	1	145304
19	AIR PISTON	1	145305
20	PISTON END PLATE	1	145308
21	PUMP BARREL	1	145309
22	PLUNGER GLAND	1	145310
23	PUMP PLUNGER ASSEMBLY	1	145311
24	RELIEF VALVE PISTON	1	145312
25	RELIEF VALVE SPRING	1	145313
26	RELIEF VALVE CAP	1	145314
27	ELBOW	(Containing Items 27A to 27E)	1454
27A	AIR VALVES AND FITTINGS KIT	1	
27B	SWIVEL ELBOW ADAPTOR	1	
27C	SWIVEL ELBOW ADAPTOR	1	
27D	STRAIGHT ADAPTOR	1	
27E	STRAIGHT ADAPTOR	1	
28	BULKHEAD CONNECTOR	1	145404
29	CONTROL VALVE	1	1454041
30	CONTROL VALVE BUTTON	1	1455
31	POLYURETHANE TUBE	1	39101
31A	SETAIR INLET TAILPIECE	Optional Extra	39102
31B	AIR INLET CHUCK	Optional Extra	39103
32	AIR HOSE	1	791106
33	CONNECTORSHUTTLE	1	791107
34	VALVE SHUTTLE VALVE	4	791112
35	SPRING	1	791113
36	CYLINDER CAP HEAD	1	850306
37	SCREW AIR PISTON RETURN	(Containing Items 37A to 37N)	1453K
37A - D	SPRINGGLAND RETAINER	4	
37E - F	SEAL KIT	3	
37G - H	'O' RING	2	
37J	'U' RING	1	
37K - L	BONDED SEAL	2	
37M	COPPER WASHER	1	
37N	BALLS	1	

## 2.8 TONNE HAND OPERATED SCISSOR JACKING BEAM Part Number H1500

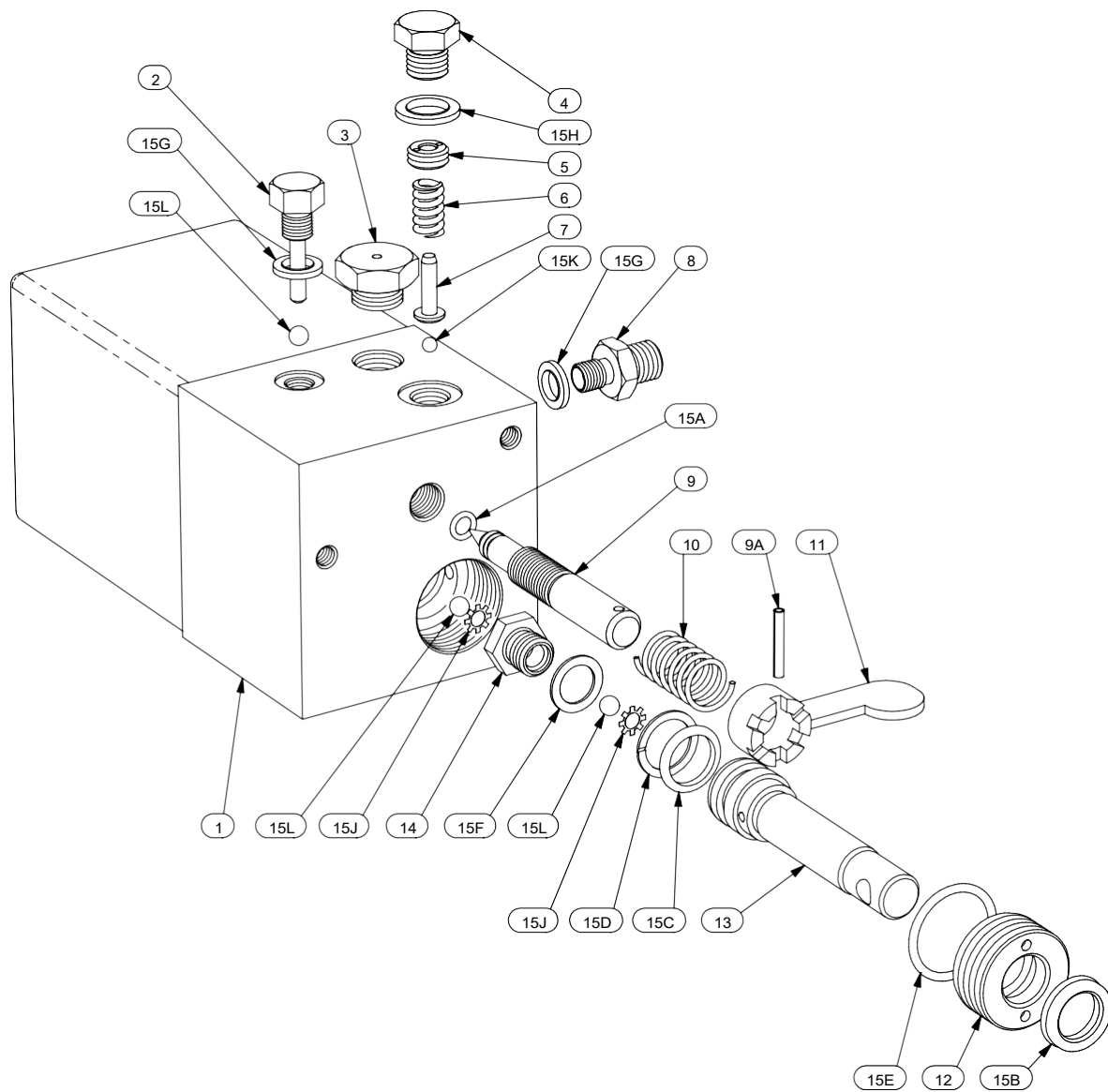


## 2.8 TONNE HAND OPERATED SCISSOR JACKING

### BEAM Part Number H1500

<u>ITEM No.</u>	<u>DESCRIPTION</u>	<u>QTY</u>	<u>PART No.</u>
1	FRAME	1	H1501
2	RAM ASSEMBLY COMPLETE	1	H1602
	SERVICE EXCHANGE RAM	1	H1602E
	RAM SEAL KIT	1	1502K
3	POWER PACK ASSEMBLY COMPLETE	1	H1503
	SERVICE EXCHANGE POWER PACK	1	1503E
	PUMP SEAL KIT	1	1103
4	OUTER SCISSOR	1	K
5	INNER SCISSOR	1	H1604
6	-		
7	OPERATING HANDLE	1	1506LM
8	TOP BEAM	1	H1606DE
9	EXTENSION ARM – INNER LHS	1	L1508DEL
	EXTENSION ARM – INNER	1	L1508DER
10	RH EXTENSION ARM - OUTER	1	L1509DEL
	LHS EXTENSION ARM - OUTER	1	L1509DER
11	RH STOP ROLLER AXLE	1	1509
12	TOP ROLLER	2	1510
13	BEAM PIVOT PIN	1	1511
14	CYLINDER PIVOT PIN	1	1512
15	PISTON PIVOT PIN	1	1513
16	POWER PACK MOUNTING BOLT SET	1	1114
17	SUPPORT ARM BOLT SET – FLAT ARMS	4	153310
17A	SUPPORT ARM STOP BOLT – HOOK ARMS (Fit No Washers)	2	133404
18	CIRCLIP SET	1	1516
19	BOTTOM ROLLER AXLE	1	1517
20	PLUNGER LINK	2	1118
21	PLUNGER LINK PIN	3	1119
22	NYLOC NUT	3	M8 NYLOC
23	BOTTOM ROLLER	2	1520
24	FIXED AXLE	1	1521
25	SCISSOR PIVOT PIN	1	1522
26	EXTENSION ARM STOP PIN	2	15084DE
27	RETURN SPRING	2	1124
28	HYDRAULIC HOSE	1	1525L
29	SUPPORT ARM (FLAT TYPE) –	Quote Support Arm Pt No.	1pr
30	RAISER BLOCK – SHORT – 25mm	2	1526
31	RAISER BLOCK – TALL – 95/78mm	2	1527
32	LIFTING PAD ASSEMBLY	2	1532
33	REPLACEMENT RUBBER PAD	2	A
34	SUPPORT ARM (HOOK TYPE) –	Quote Support Arm Pt No.	1pr
35	LOCKING CATCH	1	H1628
36	RETAINING PIN	1	1531
37	LOCKING CATCH SPINDLE	1	1529
38	RELEASE LEVER	1	1331
39			
40	SPRING STOP	4	153305
41	RETAINING PIN	4	153307
42	OUTER SPRING	4	153308
43	INNER SPRING	4	1
44	SPRING PAD	4	153308
45	AXLE BRACKET	4	2
46	ROLLER AXLE	Quote Support Arm Pt No.	4
47	ROLLER (FLAT TYPE SUPPORT) Ø3	4	13330
48	ROLLER SPACER (FLAT SUPPORT)	Quote Support Arm Pt No.	4
49	ROLLER SPACER (HOOK SUPPORT)	Quote Support Arm Pt No.	4
50	LOWER FINGER GUARD	2	H163002
51	FINGER GUARD SET (Containing Items 50, 51A to 51D, 52 & 53)	1	H1630
51A	UPPER GUARD SCREW & INTERNAL SHAKEPROOF WASHER	10	)
51B	GUIDE STRIP RETAINING SCREW	4	)
51C	GUARD RETAINING NUT	4	) 13380
51D	WASHER FOR ABOVE	4	)
52	GUIDE STRIP	2	153803L
53	UPPER FINGER GUARD	2	H163001
54	ROLLER (HOOK TYPE SUPPORT) Ø30m	8	133409
55	-		
56	-		
57	-		
58	M6x12 SOCKET HEAD CAP SCREW	4	15076D
59	M6 SINGLE COIL SPRING WASHER	4	E

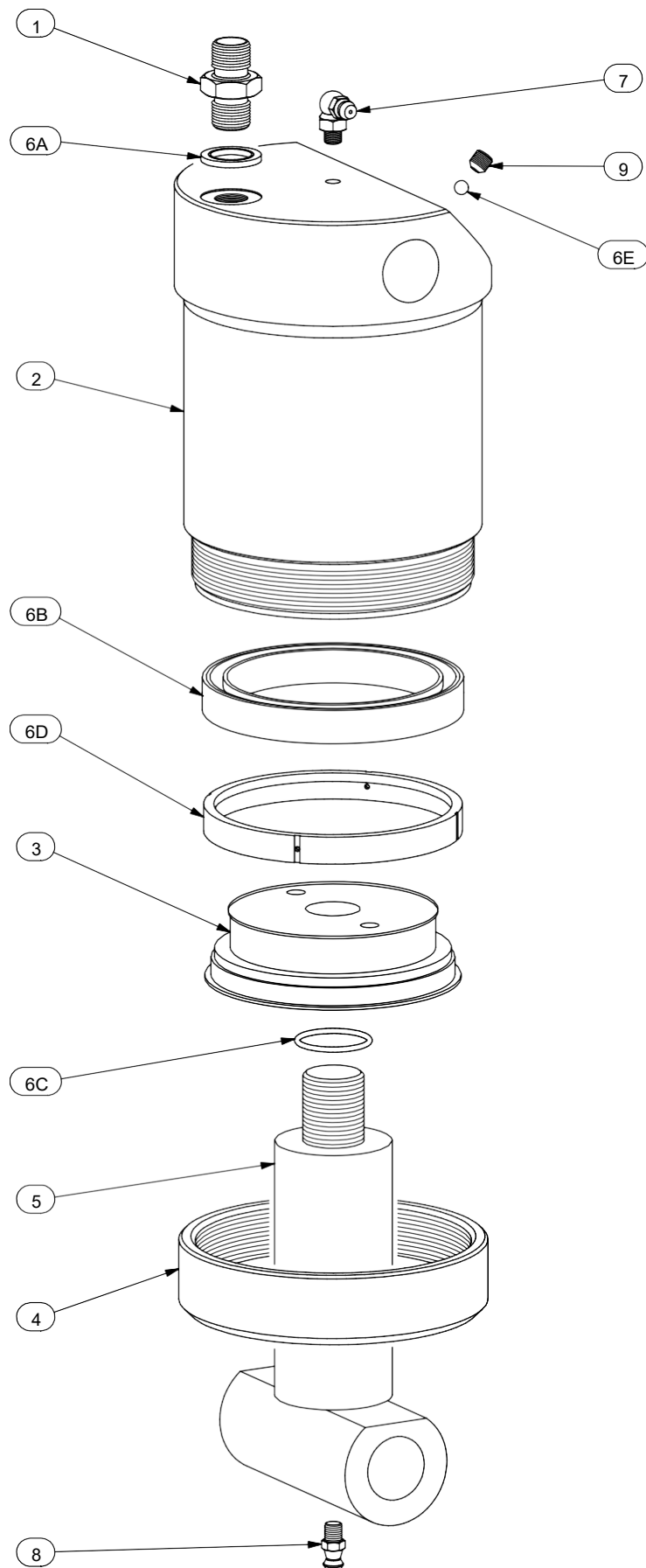
## 2.8 TONNE HAND OPERATED POWER PACK ASSEMBLY Part Number H1503



2.8 TONNE HAND OPERATED POWER PACK ASSEMBLY Part  
Number H1503

<u>ITEM No.</u>	<u>DESCRIPTION</u>	<u>QTY</u>	<u>PART No.</u>
1	VALVE BLOCK ASSEMBLY	1	H150301
2	DELIVERY VALVE PLUG	1	110303
3	FILLER PLUG	1	110312
4	RELIEF VALVE PLUG	1	110316
5	RELIEF VALVE ADJUSTING COLLAR	1	110315
6	RELIEF VALVE SPRING	1	110314
7	RELIEF VALVE PISTON	1	130313
8	OUTLET UNION	1	110311
9	RELEASE SPINDLE	1	110304
9A	LEVER RETAINING PIN	1	110308
10	RELEASE LEVER	1	110310
11	SPRINGRELEASE LEVER	1	110307
12	PLUNGER GLAND	1	110302
13	PUMP PLUNGER	1	110305
14	BY-PASS VALVE SEAT	1	110306
15	POWER PACK SEAL KIT (Containing Items 15A to 15L)	1	1103K
15A	'O' RING	1	
15B	'U' RING	1	
15C	'D' RING	1	
15D	'A.E.'	1	
15E	RINGO'	1	
15F	RING	1	
15G	COPPER WASHER	2	
15H	BONDED WASHER	1	
15J	BONDED WASHER	2	
15K	STAR WASHER	1	
15L	RELIEF VALVE BALL	3	

## 2.8 TONNE RAM ASSEMBLY Part Number H1602

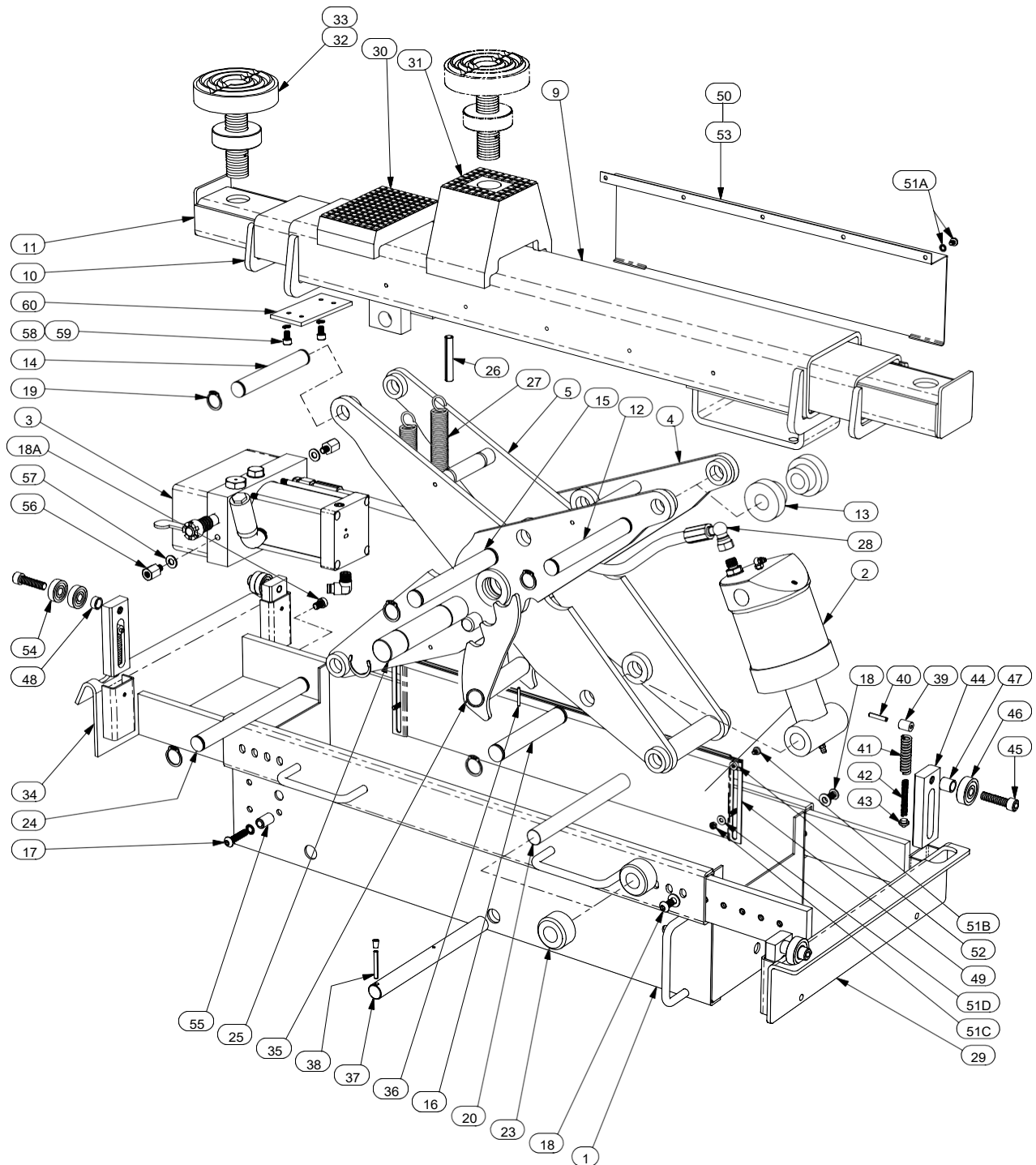


## 2.8 TONNE RAM ASSEMBLY Part Number H1602

<u>ITEM No.</u>	<u>DESCRIPTION</u>	<u>QTY</u>	<u>PART No.</u>
1	UNION / VELOCITY VALVE	1	15025
2	CYLINDER	1	H16021
3	PISTON HEAD	1	H16023
4	CYLINDER GLAND	1	H16024
5	PISTON ROD	1	H16022
6	RAM SEAL KIT (Containing Items 6A to 6E)	1	1502K
6A	BONDED WASHER	1	
6B	RAM SEAL	1	
6C	'O' RING	1	
6D	GUIDE RING	1	
6E	BALL	1	
7	GREASE NIPPLE	1	15026L
8	GREASE NIPPLE	1	15026
9	BLEED SCREW	1	3504

## 2.8 TONNE AIR OPERATED SCISSOR JACKING BEAM

### Part Number H1600



Support arm  
assemblies (items 29 &  
34) are  
illustrative only and  
will usually be special  
to suit your pit / lift.

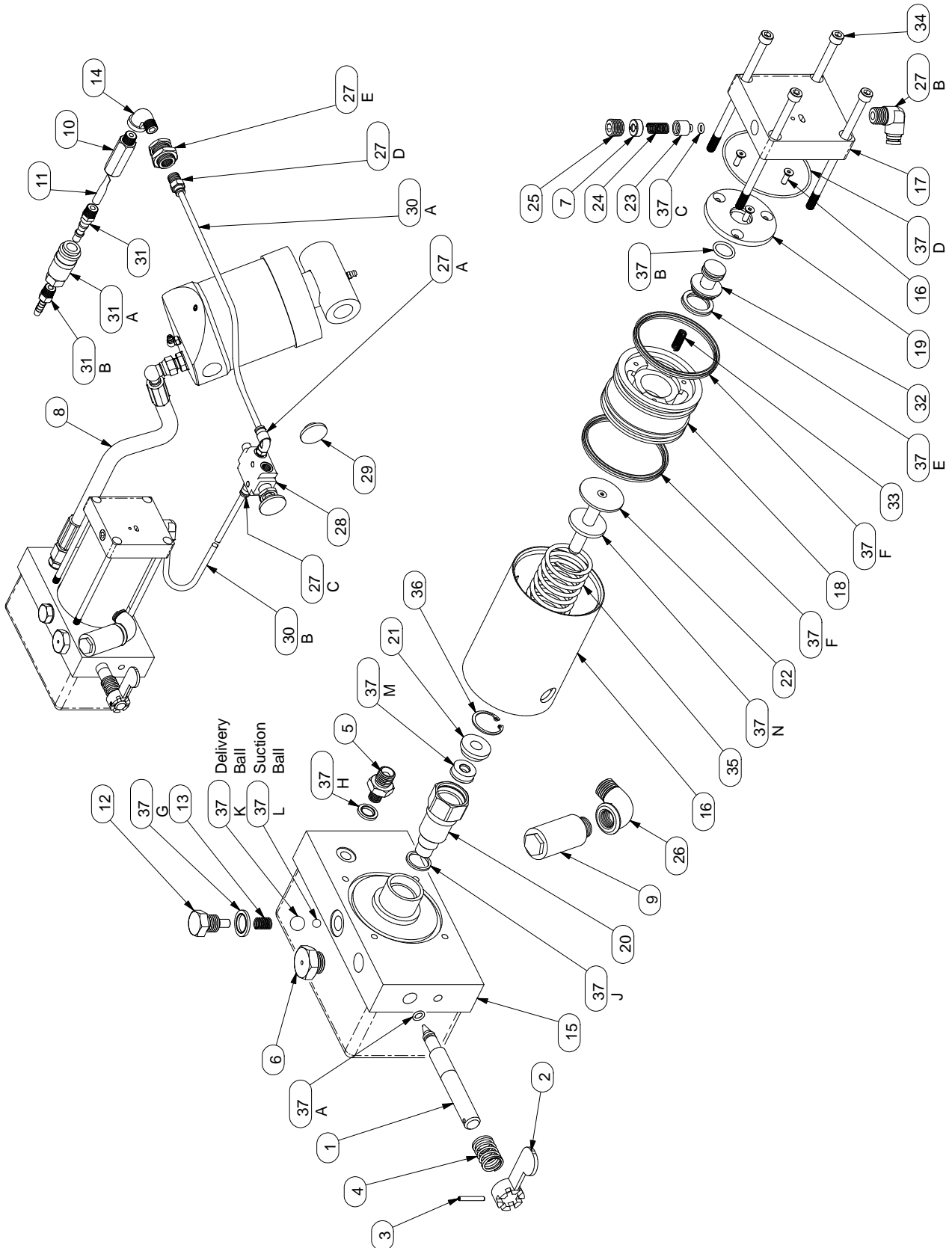


## 2.8 TONNE AIR OPERATED SCISSOR JACKING BEAM

### Part Number H1600

<u>ITEM No.</u>	<u>DESCRIPTION</u>	<u>QTY</u>	<u>PART No.</u>
1	FRAME	1	H1601
2	RAM ASSEMBLY COMPLETE	1	H1602
	SERVICE EXCHANGE RAM	1	H1602E
	RAM SEAL KIT	1	1502K
3	POWER PACK ASSEMBLY COMPLETE	1	H1653
	SERVICE EXCHANGE POWER PACK	1	H1653E
	PUMP SEAL KIT	1	16531K
4	OUTER SCISSOR	1	H1604
5	INNER SCISSOR	1	H1605
6	-		
7	-		
8	-		
9	TOP BEAM	1	H1606DE
10	EXTENSION ARM – INNER LHS	1	L1508DEL
	EXTENSION ARM – INNER RHS	1	L1508DER
11	EXTENSION ARM - OUTER LHS	1	L1509DEL
	EXTENSION ARM - OUTER	1	L1509DER
12	RHSTOP ROLLER AXLE	1	1509
13	TOP ROLLER	2	1510
14	BEAM PIVOT PIN	1	1511
15	CYLINDER PIVOT PIN	1	1512
16	PISTON PIVOT PIN	1	1513
17	POWER PACK MOUNTING BOLT SET	1	1214
18	SUPPORT ARM BOLT SET – FLAT ARMS	4	153310
18A	SUPPORT ARM STOP BOLT – HOOK ARMS (Fit No Washers)	2	133404
19	CIRCLIP SET	1	1616L
20	BOTTOM ROLLER AXLE	1	1517
21	-		
22	-		
23	BOTTOM ROLLER	2	1520
24	FIXED AXLE	1	1521
25	SCISSOR PIVOT PIN	1	1522
26	EXTENSION ARM STOP PIN	2	15084DE
27	RETURN SPRING	2	1124
28	HYDRAULIC HOSE	1	1525L
29	SUPPORT ARM (FLAT TYPE) –	Quote Support Arm Pt No.	1pr
30	RAISER BLOCK – SHORT – 25mm	2	1526
31	RAISER BLOCK – TALL – 95/78mm	2	1527
32	LIFTING PAD ASSEMBLY	2	1532A
33	REPLACEMENT RUBBER PAD	2	15324
34	SUPPORT ARM (HOOK TYPE) –	Quote Support Arm Pt No.	1pr
35	LOCKING CATCH	1	H1628
36	RETAINING PIN	1	1531
37	LOCKING CATCH SPINDLE	1	1529
38	RELEASE LEVER	1	1331
39	SPRING STOP	4	153305
40	RETAINING PIN	4	153307
41	OUTER SPRING	4	1533081
42	INNER SPRING	4	1533082
43	SPRING PAD	4	133304
44	AXLE BRACKET	4	153302
45	ROLLER AXLE	Quote Support Arm Pt No.	4
46	ROLLER (FLAT TYPE SUPPORT) Ø35mm	4	133309
47	ROLLER SPACER (FLAT SUPPORT)	Quote Support Arm Pt No.	4
48	ROLLER SPACER (HOOK SUPPORT)	Quote Support Arm Pt No.	4
49	LOWER FINGER GUARD	2	H163002
50	FINGER GUARD SET (Containing Items 50, 51A to 51D, 52 & 53)	1	H1630
51A	UPPER GUARD SCREW & INTERNAL SHAKEPROOF	10	)
51B	WASHERGUIDE STRIP RETAINING SCREW	4	)
51C	GUARD RETAINING NUT	4	)
51D	WASHER FOR ABOVE	4	)
52	GUIDE STRIP	2	153803LP
53	UPPER FINGER GUARD	2	H163001
54	ROLLER (HOOK TYPE SUPPORT) Ø30mm	8	133409
55	STOP – RELEASE LEVER	1	1206
56	PILLAR	3	1615L
57	FLAT WASHER	3	M8 FORM 'A'
58	M6x12 SOCKET HEAD CAP SCREW	4	15076DE
59	M6 SINGLE COIL SPRING WASHER	4	15078DE
60	STOP PLATE	2	15075DE

## 2.8T AIR OPERATED POWER PACK ASSEMBLY Part Number H1653

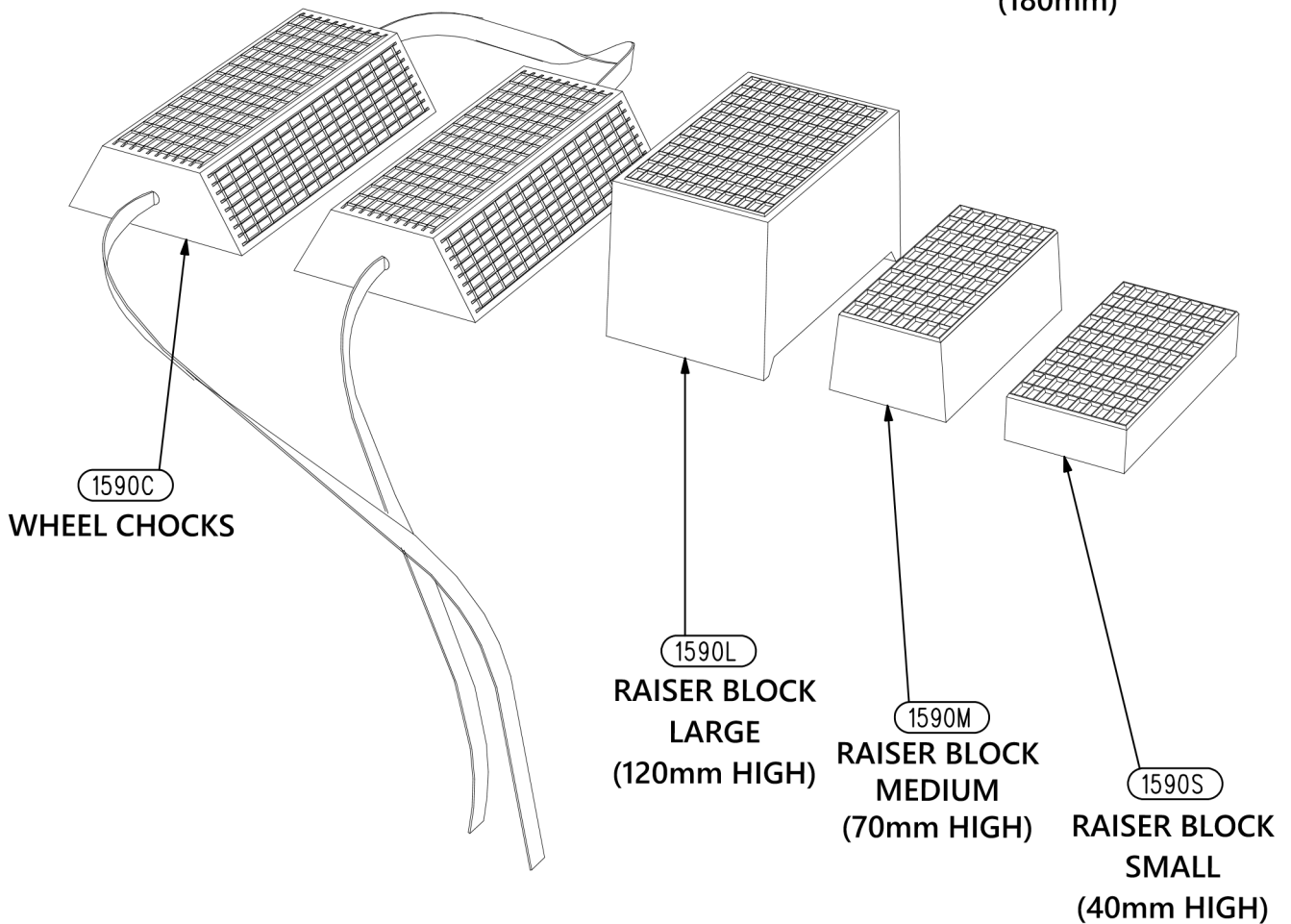
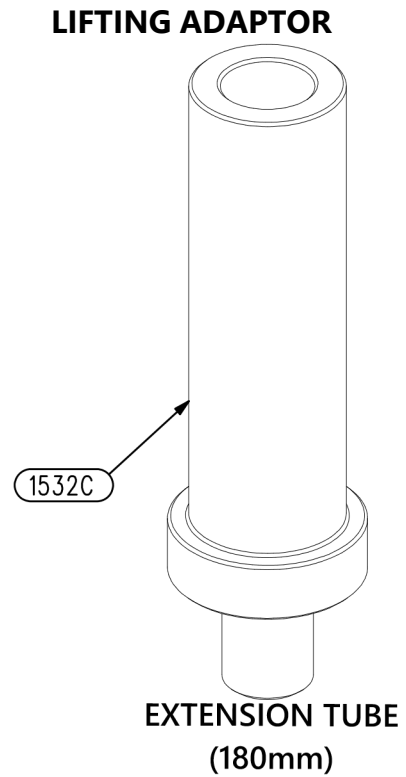
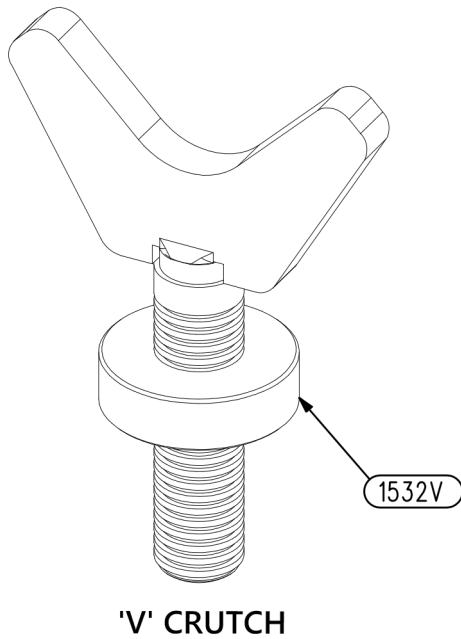


## 2.8 TONNE AIR OPERATED POWER PACK ASSEMBLY

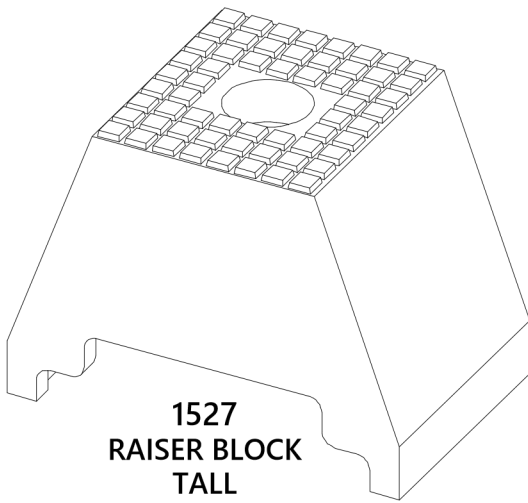
### Part Number H1653

<u>ITEM No.</u>	<u>DESCRIPTION</u>	<u>QTY</u>	<u>PART No.</u>
1	RELEASE SPINDLE	1	160304
2	RELEASE LEVER	1	110307
3	LEVER RETAINING PIN	1	110308
4	RELEASE LEVER SPRING	1	110310
5	OUTLET UNION	1	110311
6	FILLER PLUG	1	110312
7	RELIEF VALVE ADJUSTING COLLAR	1	110315
8	HYDRAULIC HOSE ASSEMBLY	1	1525L
9	SILENCER	1	120315
10	INLET FILTER BODY	1	1210
11	AIR INLET FILTER	1	1211
12	DELIVERY VALVE	1	140302L
13	PLUG	1	140304L
14	DELIVERY VALVE SPRING	1	1427
15	ELBOW	1	H165301
16	VALVE BLOCK ASSEMBLY	1	145302
17	AIR CYLINDER	1	145303
18	CYLINDER AIR CAP	1	145304
19	AIR PISTON	1	145305
20	PISTON END PLATE	1	165308
21	PUMP BARREL	1	165309
22	PLUNGER GLAND	1	165310
23	PUMP PLUNGER ASSEMBLY	1	145311
24	RELIEF VALVE PISTON	1	185312
25	RELIEF VALVE SPRING	1	145313
26	RELIEF VALVE CAP	1	145314
27	ELBOW	(Containing Items 27A to 27E)	1454
27A	AIR VALVES AND FITTINGS KIT	1	
27B	SWIVEL ELBOW ADAPTOR	1	
27C	SWIVEL ELBOW ADAPTOR	1	
27D	STRAIGHT ADAPTOR	1	
27E	STRAIGHT ADAPTOR	1	
28	BULKHEAD CONNECTOR	1	145404
29	CONTROL VALVE	1	1454041
30	CONTROL VALVE BUTTON	1	1655
31	POLYURETHANE TUBE	1	39101
31A	SETAIR INLET TAILPIECE	Optional Extra	39102
31B	AIR INLET CHUCK	Optional Extra	39103
32	AIR HOSE	1	791106
33	CONNECTORSHUTTLE	1	791107
34	VALVE SHUTTLE VALVE	4	791112
35	SPRING	1	791113
36	CYLINDER CAP HEAD	1	850306
37	SCREW AIR PISTON RETURN	(Containing Items 37A to 37N)	1653K
37A - D	SPRINGGLAND RETAINER	4	
37E - F	SEAL KIT	3	
37G - H	'O' RING	2	
37J	'U' RING	1	
37K - L	BONDED SEAL	2	
37M	COPPER WASHER	1	
37N	BALLS	1	

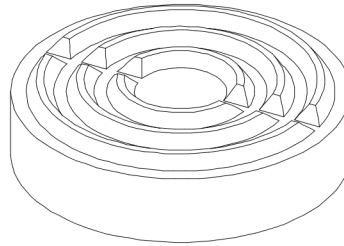
**OPTIONAL EXTRAS**  
**POLYURETHANE RAISER BLOCKS, WHEEL CHOCKS,**  
**LIFTING ADAPTOR & EXTENSION TUBE**



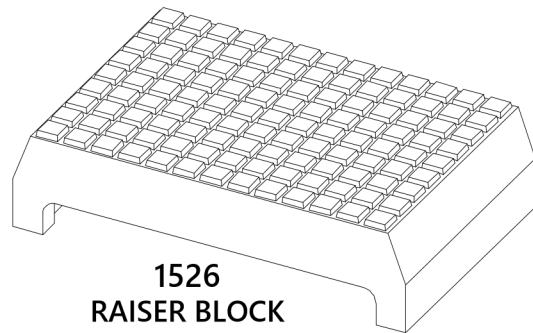
## CONSUMABLE SPARE PARTS



**1527  
RAISER BLOCK  
TALL  
(95/78mm HIGH)**



**15324  
RUBBER PAD**



**1526  
RAISER BLOCK  
SHORT  
(25mm HIGH)**



## SERVICE HISTORY

## MAINTENANCE AND SERVICE RECORD

MODEL:

SERIAL NUMBER:

INSTALLATION DATE:

[illegible]



Established 1971

**JHM BUTT & CO LIMITED**

Brunel Close, Brunel Industrial Estate, Harworth, Doncaster DN11 8QA,  
England Telephone 01302 710868

Web site - [www.jhmbuttco.com](http://www.jhmbuttco.com)

Email - [equipmentsales@jhmbuttco.com](mailto:equipmentsales@jhmbuttco.com)

