

LASER[®]

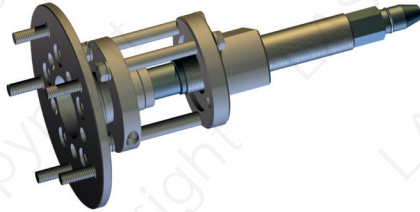
Inner Bearing Removal Tool Ford Transit

Instructions



- Grips on the bearing taper and does not need to act as a wedge.
- Must be used in conjunction with Laser **Part No. 5545**.
- Provides a safer, faster means of bearing removal without grinding.
- An engineered solution specifically designed for the Ford Transit with 3 legged puller design.

Assembly Instructions



Assemble shells just below top lip on bearing ring.



Tighten clamp bolts till gap closes.



Assemble the force screw and upper body using the bolts and crush tubes provided.



NB: Ensure all three bolts are used and tighten prior to applying force.

Transit Inner Bearing Ring Removal Instructions

See Fig.1, use this kit with Laser 5545 (see fig 2) using components 1, 2 and 3. This kit comprises of an accurately machined pair of clamp shells specifically sized to fit the Ford Transit inner bearing ring. Unlike other similar designs it is specifically sized for this operation and as such grips on the bearing taper and does not need to act as a wedge. This minimises tool damage over time giving significantly increased tool life. This design utilises 3 puller legs so ensuring a square and even pulling load. This 3 leg design is significantly better than the more common 2 leg designs.



Bearing ring, top of clamp should butt up to upper lip on the bearing ring.



Fig 1.



Fig 2.



Fig 3.

Assemble as shown in figure 3.

Once assembled wind the force screw down and continue loading to remove the inner bearing ring. NB: Ensure the force screw is well lubricated with Molybdenum Disulphide Grease (as used in CV joints).

When removing inner ring there is need to use hammer force.